

## **Historic, Archive Document**

Do not assume content reflects current scientific knowledge, policies, or practices.



J. Lumsden.  
*The MOST for the MONEY*

*Roses, Cannas and Decorative Plants  
of all kinds*



*The Great Hardy Everblooming Bush Rose.*  
"STURDY AS AN OAK"

**WEST GROVE ROSE & FLORAL CO.**  
West Grove, Penna.

The HOUSE of DINGEE has made the "COCHET ROSES" famous the world over. Absolutely the best of all hardy, free blooming Bush Roses for the home, yard or garden.

PINK  
MAMAN COCHET

WHITE  
MAMAN  
COCHET

CRIMSON MAMAN

RED  
MAMAN  
COCHET

YELLOW  
MAMAN COCHET

THE FAMOUS  
COCHET ROSES  
FINE SUPER HARDY  
EVER-BLOOMING VARIETIES  
POSSIBLE PRODUCTS.

# West Grove



# Quality Roses

## The Greatest Opportunity

### to Secure the Famous West Grove Roses, Plants and Bulbs at a Remarkably Low Price

In these times of high prices we are going to give everyone an opportunity to secure a collection of plants or bulbs at a remarkably low price considering the cost of production. The reason we can afford to do this is the wonderful production the past year and the efficient methods employed. The collections are of exceptional value, made up of standard size plants, covered by our guarantee that applies to all goods offered in this book. We will also

#### GIVE FREE OF CHARGE WITH EVERY ORDER

amounting to \$1.00 or more a strong, first size plant of the Wonderful Rose Mad. Second Weber. Illustration on the front cover of this book. A wonderful Everblooming Hardy Bush Rose. A lovely shade of pink. Buds exquisite in form opening full and double.

## Famous for More than Fifty Years

Both by tradition and in expert knowledge this little village of West Grove, Pa., for over fifty years has been recognized as the home of the Rose growing industry in America.

The first commercial success in growing Rose plants on their own roots (and they are the best kind for the amateur planter) and the pioneer who was the first in America to send Rose plants to all parts of the country safely by mail was Charles Dingee, who started in business here sixty-seven years ago; it was he who made West Grove famous for its Roses, Cannas and Flowering Plants. The members of this Company were associated with him for many years, and under his tuition learned the art of growing the Roses and other plants that have been known as the best for over half a century.

### Our Responsibility

If you desire to know of our responsibility we would refer you to the First National Bank. West Chester, Pa., with whom we have done business for nearly half a century, and they will cheerfully answer any questions as to our reliability.

Everybody seems to be planting flowers in and about the home. Money spent in this way yields the largest returns on the investment of any money that can be spent in making your property more valuable, in making your home more attractive, and increasing the joy of living.

### Our Guarantee

Our Guarantee is the best that can be given by any reputable firm to deliver goods to you in first-class growing condition and failing therein to replace them immediately and if not satisfactory to notify us at once and any mistake or dissatisfaction will be adjusted.

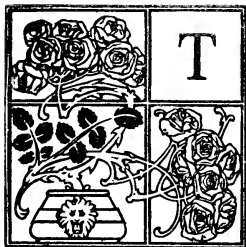
### Pot-Grown Plants

The Roses and plants we offer are all grown in pots or crocks, and according to the size of the plant offered. These pot grown Roses can be safely planted at any time during the growing season, with perfect safety and without checking the growth of the plant in the least. The large ones, i. e., the two and three year old plants are always shipped by express without removing the soil from the roots in which they have been growing in the pots. The roots with the soil on are wrapped in wax paper and sphagnum moss, keeping them in perfect condition for weeks. In planting do not remove this soil, but simply loosen it if too hard.

The small plants are offered at postpaid prices and sent by Parcel's Post without the soil on the roots, but they are much better being sent by express at purchaser's expense, with the soil on the roots, as they reach destination in much better condition, and there is less risk in planting.

**The WEST GROVE ROSE & FLORAL CO.**  
West Grove, Pa., U. S. A.

# OUR OWN ROOT ROSES



HERE are two distinct methods of propagating Rose plants or bushes. One by budding or grafting a small bud or graft of the true Rose onto the root of wild manettia, sweetbriar or rugosa, and the other is by growing them on their own roots. The first method is the one employed by European growers. The cost of producing a budded plant is very small; first, on account

of the cheap labor employed, and second, on account of the cost of the wild roots and the bud. A Rose bush will produce a great quantity of eyes, buds or grafts, and each one if used in budding or grafting on wild roots makes a budded or grafted Rose bush, and of course can be sold at a very low price at a good profit. These are the ones sent to America by European growers to nurserymen, seedsmen and department stores, and they can sell them cheaply because they are cheap.

The method employed by us to produce an own root plant is to take a branch of the mother plant,

with two, three or more eyes or buds, and place in sand until roots are formed on this branch. It is then planted in pots and grown until they attain the size desired. These plants have to be shifted frequently into larger pots. This method of growing Roses in this country is very much more expensive than producing the budded plants, but these own root plants are worth many times more than the budded ones, on account of their lasting qualities. A budded plant has a very weak top or branch, the wild root is the only strong part about it, and as a result the top soon dies and the roots put forth strong shoots, which are neither useful nor ornamental, as they produce no bloom and foliage is unsightly. An own root plant after once established is everlasting, as, if the top should be killed, it comes up from the roots stronger than before and of the same variety as the original. Buying cheap plants to save money is like stopping a clock to save time. Don't be induced to buy budded or grafted Roses, no matter how cheap, but start right with these own root plants that have given so much satisfaction for over 60 years. These are the kind found so often in the old garden of our grandparents and many still growing there today attesting to the sterling qualities of this own root stock.

## Buy Direct from the Grower

In purchasing direct from the grower you save the middleman's profit and secure the best. We are not jobbers but maintain thousands of square feet of ground under glass in order to produce the stock we sell, and grow them in as natural a way as it is possible to do. These are not the cheap department store or nurseryman's roses which are usually secured from Holland and budded stock, and nine times out of ten you do not know what kind you are getting, whether a common climber or a bush rose, as the importer receives no guarantee from the grower and they in turn cannot give you any. So when buying roses purchase them from a reliable firm, one who has made a life study of growing the best kind suited for the amateur grower.

**APRIL, MAY, JUNE and JULY** are **IDEAL MONTHS** for planting **POT GROWN ROSES** and other plants.

If this book should happen to reach you late in the season you may think it too late to plant out anything, but we wish to say that our plants are now **grown in pots**, and can be safely planted any time during the growing season with perfect safety, especially if you will have them shipped with the soil on their roots, their growth will not be checked in the least.

## Instructions for Ordering

Our terms are cash with order, except where satisfactory bank reference is given, when we will gladly open an account. Goods will be shipped C. O. D., if one-half of order is remitted with order. Money may be sent at our risk by Post Office Money Order, Express Money Order, Bank Draft, Money (not stamps) in Registered Letter. We will be responsible for the safe carriage of money sent us in any of these ways, and, if lost, will give full value. Please do not send stamps for money. They often come stuck together, or stuck to the letter, so that they cannot be taken out except by soaking. Canadian customers can remit by International Money Order on West Grove, Bank Draft, or currency in Registered Letter. Canadian postage stamps have no value here.

**Please observe carefully.** When ordering, please use the order sheet provided for the purpose whenever possible. Simply fill up the blanks, giving the number and name of the varieties wanted, with size and price; we will understand.

**Order Early.** Many of our customers order early, and the plants are set aside; the earlier you order the better. We will book for delivery whenever you direct.

**Parcel Post C. O. D.** If you desire your order, no matter how small, sent C. O. D. by Parcel Post we can do so, at an additional cost of only 10 cents, and the small fee for the money order which is 3 cents up to \$2.50; 5 cents up to \$5.00, making it much cheaper than by express, as you have no express

charges and additional charge for returning the money.

**Canadian Customers.** Canadian laws prohibit sending dormant Roses or Shrubs in Canada except from March 15 to May 15, and from October 7 to December 7. All other goods, including our pot-grown Roses, from 3 1/2 inch pots and smaller, grown under glass, are admitted at any time.

**Foreign Orders.** Twenty per cent extra should be added to orders going outside of United States proper to pay extra cost of packing and postage. To countries with which we have a parcel post, goods can be sent by mail. They also can be sent by express, but the person ordering must give the name and address of some one in New York who will receive the goods, prepay the ocean charges and forward them.

# "Great Trial Collection of Own-Root Roses"

**14** Superb Hardy Freeblooming Varieties Sent Postpaid for **\$1**

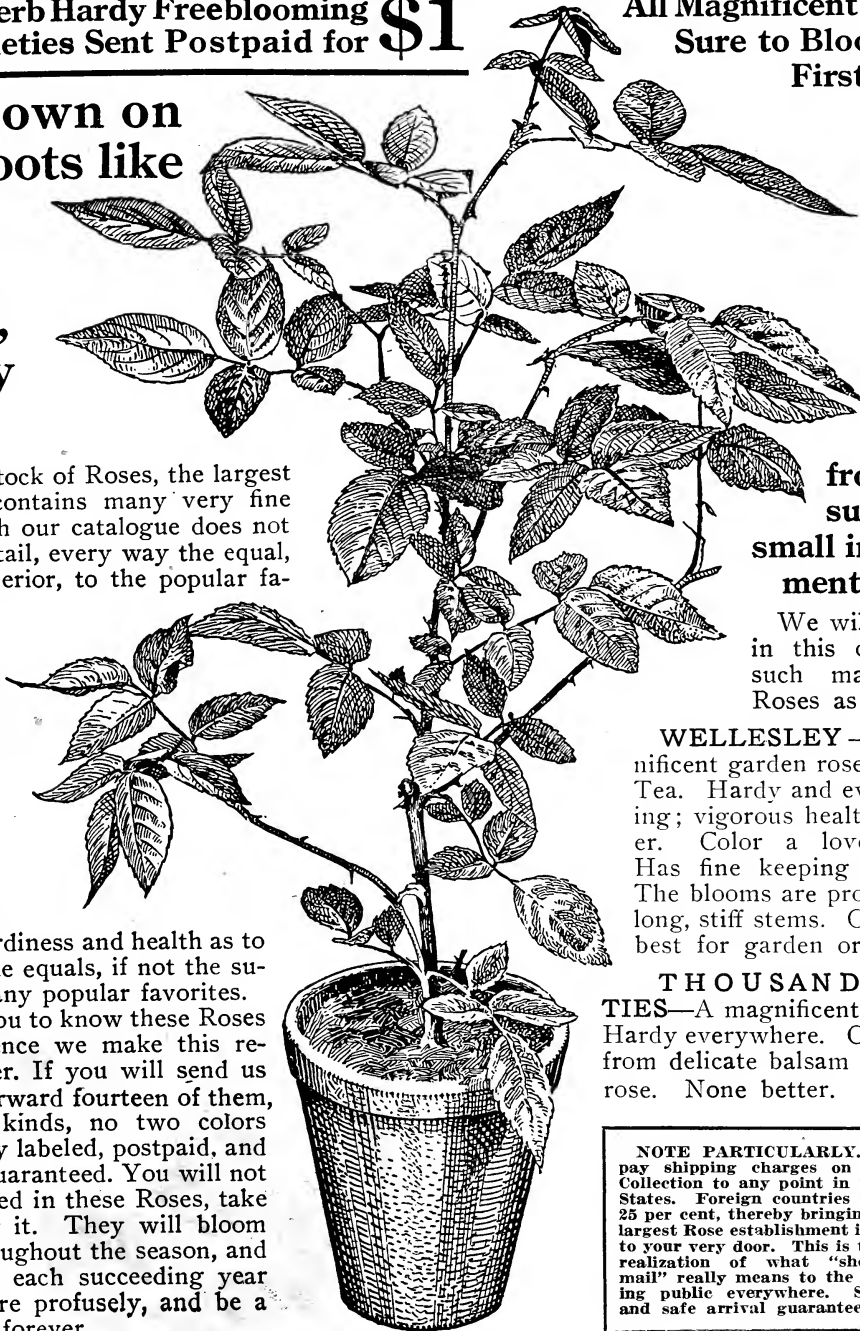
All Magnificent Plants  
Sure to Bloom the  
First Year.

**Pot-Grown on  
Own Roots like  
this,  
Strong,  
Robust,  
Healthy  
Plants.**

Our great stock of Roses, the largest in America, contains many very fine varieties which our catalogue does not describe in detail, every way the equal, if not the superior, to the popular favorites.

Amongst these Roses are some of the finest ever grown by anybody anywhere, Roses that combine such beauty of form, richness of color, freedom of bloom and hardiness and health as to make them the equals, if not the superiors, of many popular favorites.

We want you to know these Roses as we do, hence we make this remarkable offer. If you will send us \$1 we will forward fourteen of them, all different kinds, no two colors alike, properly labeled, postpaid, and safe arrival guaranteed. You will not be disappointed in these Roses, take our word for it. They will bloom this year throughout the season, and will continue each succeeding year to bloom more profusely, and be a source of joy forever.



A trial will convince you. Think of the pleasure

from such a small investment.

We will include in this collection such magnificent Roses as

**WELLESLEY**—A magnificent garden rose. Hybrid Tea. Hardy and everblooming; vigorous healthy grower. Color a lovely pink. Has fine keeping qualities. The blooms are produced on long, stiff stems. One of the best for garden or yard.

**THOUSAND BEAUTIES**—A magnificent Climber. Hardy everywhere. Colors run from delicate balsam to tender rose. None better.

**NOTE PARTICULARLY.**—We prepay shipping charges on this Trial Collection to any point in the United States. Foreign countries please add 25 per cent, thereby bringing this, the largest Rose establishment in America, to your very door. This is the highest realization of what "shopping by mail" really means to the flower-loving public everywhere. Satisfaction and safe arrival guaranteed.

**With the Free Rose offered on Page 3 makes 15 Superb Plants for \$1.00, Postpaid**

# 10 Famous West Grove Roses for \$1.25

REGULAR PRICE 20 and 25c Each, SPECIAL BARGAIN PRICE, 12 1-2c Each  
Postpaid, with Safe Arrival Guaranteed

Every spring we receive thousands of letters asking us to name a collection of Roses—the best kind for general home culture. Of our vast collection the ten varieties named below are in our opinion among the best garden Roses for all sections of the country. Hardiness, vigorous growth, freedom of bloom, color and beauty of flower make them the best collection for amateur planting. They will bloom with the utmost freedom this year and this we guarantee. No two alike. In this collection we include our wonderful Rose Charles Dingee, in itself fully worth the price of the complete set. All labeled and sent postpaid. Safe arrival guaranteed to any point in the United States. Please order as the West Grove Collection.

The following great Roses comprise this collection. Each one will be correctly labeled.  
See various pages of the book for fuller descriptions.

**CHARLES DINGEE**—Without question the greatest Rose ever grown. See its glorious beauty of form and color on the back cover.

**CRIMSON MAMAN COCHET**—It bears masses of full, deep-formed flowers singly, on long, substantial stems. The color is a new and clear shade of red or velvety crimson, brightening in center; of exquisite fragrance.

**WHITE MAMAN COCHET**—A magnificent snow-white Rose with a faint tinge of pale blush. The best white for open ground culture.

**KEYSTONE**—A splendid yellow climbing Rose of thrifty habit, beautiful foliage and absolutely hardy.

**GOLDEN GATE**—Magnificent creamy-white Rose, shaded golden yellow and rose. Always in bloom.

**MADAME ABEL CHATENAY**—Brilliant rosy carmine with shadings of deeper color. Particularly hardy and free in bloom.

**SOUVENIR DE PIERRE NOTTING**—Handsome apricot-yellow Rose tinged with orange and edge of petals shaded carmine-rose.

**PINK LA FRANCE**—Large buds and blooms of lovely shape and color, delightfully fragrant.

**RHEA REID**—A beautiful Hybrid Tea Rose. Color vivid scarlet-crimson. Rapid grower and profuse bloomer.

**CLIMBING WHITE MAMAN COCHET**—Hardy Ever-blooming Climbing Rose. Bloom same style and color as the old favorite White Maman Cochet.

## Special Offer

This entire collection of 10 magnificent Dingee Roses, in strong one-year-old plants or first size, for \$1.25, postpaid; two-year-old plants on own roots. By express with soil on their roots at purchaser's expense.

## \$3.50

## Princess Bonnie Set of Popular Garden Roses

Hardy in the North. Magnificent in the South. Blooms all the time. Regular prices, 15c and 20c. Special bargain price, 10½c each.

### 12 Fine Free-Blooming Roses for \$1.25

This collection is a favorite one. If you would have twelve of the very choicest Roses, hardy and free-blooming—worth as much as five times as many in cheap and unknown kinds possessing little or no merit—we strongly urge you to order the Princess Bonnie Set. Every Rose in this collection is hardy with protection.

**PRINCESS BONNIE**—Solid crimson.  
**PINK MAMAN COCHET**—Pink and silvery rose.  
**METEOR**—Deep velvety crimson.  
**MAD. ABEL CHATENAY**—Rosy carmine.  
**PERLE DES JARDINS**—Clear, golden yellow.  
**HENRY M. STANLEY**—Clear amber-rose.  
**PEARL RIVERS**—Ivory-white, shaded rose.  
**PRINCESS HOHENZOLLERN**—Deep satiny red.  
**QUEEN'S SCARLET**—Deep, velvety red.  
**CLIMBING CLOTILDE SOUPERT**—Ivory-white.  
**VIRGINIA**—Yellow, with tinge of saffron.  
**PINK LA FRANCE**—Silvery pink; fragrant.

More complete description of all of the above Reses will be found on other pages of this book.

**Special Offer** For \$1.25 we will send to any address one plant each of the above collection, twelve vigorous, strong one-year-old Roses, described above. For \$3.50 we will send all of the twelve varieties described above, strong two-year-old plants, on own roots, by express. Full descriptions of the above Roses will be found elsewhere in this book.



Rose Charles Dingee as Grown by One of Our Customers. No Garden Complete without a "Charles Dingee."



# "Jacqueminot" Set SIX HARDY HYBRID PERPETUAL ROSES

for 60 Cents

**REGULAR PRICE 20c EACH**

**SPECIAL BARGAIN PRICE 10c EACH**

Hybrid Perpetual Roses are considered the most valuable of all hardy plants. They are of vigorous growth and have large flowers.

**GEN. JACQUEMINOT**—Bright crimson; very rich and velvety. One of the best.

**GLOIRE LYONNAISE**—The best of its color; pale shade of salmon-yellow, sometimes passing to rich, creamy-white.

**VICK'S CAPRICE**—Clear, satiny pink, striped and dashed with white and bright carmine.

**MAD. MASSON**—A superb variety. Color clear bright rose. Distinct and charming.

**FRANCOIS LEVET**—Delightful shade of cherry-pink, shaded with carmine. Flowers extra large. Remarkably free in bloom.

**GIANT OF BATTLES**—One of the best, if not the best, hardy, vivid crimson garden Rose.

**Special Offer** For 60 cents we will send postpaid, one each of the hardy Hybrid Perpetual Roses described above; one each in two-year-old plants, for \$2.25, by express. Please order as "Jacqueminot" Set.



General Jacqueminot.

## Keystone Set, the Best Kinds for Outdoor Planting

12 Hardy Everblooming Roses for \$1.25

**REGULAR PRICE 15 AND 20c SPECIAL BARGAIN PRICE 10½c EACH**

This set is especially valuable for the beginner in Rose-culture, whose knowledge of kinds is limited. The Keystone Collection is hardy with protection, and affords a continued supply of blooms through the entire season. Reserve for it a place in your garden.

**KEYSTONE**—Everblooming yellow climber.

**ALINE SISLEY**—Rich, rare shade of violet-red, brightened with crimson maroon.

**THE QUEEN**—Flowers pure snow-white; large.

**ETOILE DE LYON**—Rich, golden yellow.

**TRIOMPHE DE PERNET PERE**—Pine, clear magenta-red, passing to bright crimson.

**SIR THOMAS LIPTON**—The best pure white Rugosa; flowers large and perfectly double.

**MME. EUGENE MARLITT**—Rich crimson-red.

**COMTESSE RIZA DU PARC**—Coppery rose.

**WHITE MAMAN COCHET**—Snowy-white, with slight suggestion of pale bluish.

**Mlle. CECIL BERTHOD**—Deep golden yellow.

**CLOTILDE SOUPERT**—Ivory-white, shading toward the center to silvery rose.

**MAD. JULES GROLEZ (Red Kaiserin Augusta Victoria)**—Cherry-red; distinct and charming.

**Special Offer** For \$1.25 we will send to any address one plant each of the twelve vigorous, strong, one-year-old Roses, described above. One each larger size, \$1.75, postpaid; for \$3.75 we will send all of the twelve varieties, described above, strong two-year-old plants, on own roots, by express. Full descriptions of the above Roses will be found elsewhere in this book.



Decorative Type of Dahlias.

## Century Collection of Dahlias

EIGHT FOR 50 CENTS POSTPAID

For 60c we will send you postpaid, by mail, the following magnificent Dahlias. Strong pot plants, the right kind for planting in order to secure the best blooms. This collection comprises plants of the leading varieties of the different types and enables you to secure a fine assortment of style and color, of these most popular flowers, at a very low price.

**TWENTIETH CENTURY**—Early in season, intense rosy crimson, shading to white at tips, with a bright pink blotch in center petals.

**GOLDEN CENTURY**—Sensational golden yellow, shaded amber. Immense size. Long wiry stems. Excellent for cut flowers, of good keeping qualities.

**WHITE KRIMHILDE (Cactus)**—A new, pure white, and one of the best white commercial varieties, owing to its wonderful keeping qualities.

**FRUTE (Cactus)**—Soft salmon pink, shaded and tipped clear bright pink. One of the finest pink Dahlias.

**GRAND DUKE ALEXIS (Decorative)**—Immense flowers of pure white with quilled petals. A profuse bloomer.

**JACK ROSE (Decorative)**—The best of crimson Dahlias, that brilliant color that makes the Jack Rose so popular.

**ETHEL SCHMIDT (Fancy)**—White suffused pink, spotted and pencilled crimson. A beautiful flower of perfect form and produced on long, slender stems in great profusion.

**ARABELLA (Show)**—One of the loveliest Dahlias of soft primrose, shaded and tipped rose.

Order as the "Century Collection."

# "West Grove Specials" Wonderful 50 Cent Bargain Offers of HOUSE and GARDEN PLANTS

The following collections of Rose plants and bulbs are the greatest offers ever made by any reputable establishment, and they are especially for the benefit of the thousands of friends the product of our greenhouses and nurseries have made for us. In no case are they cheap stock; plenty of that to be had elsewhere almost for the asking. These are the **Famous West Grove Goods**, the best quality in the land. You run no risk—the stock must be first-class and reach you in that condition; we guarantee this—and our guarantee means something beyond mere words. Money back if not satisfied. Each article distinctly labeled, and no two varieties alike in the same collection. Postpaid by mail at prices named.

**NOTICE:—In Ordering Collections, Purchasers Will Kindly Order by Number Only**

**Collection No. W1** For 50 cents we will select and send to any address 7 distinct, new ever-blooming Tea Roses. This is a big value for 50 cents.

**Collection No. W2** For 50 cents we will select 4 Hybrid Tea Roses and 2 Hybrid Perpetual Roses, 6 different varieties in all for 50 cents.

**Collection No. W3** For 50 cents we will select 6 Hybrid Perpetual Roses of the leading varieties, no two alike.

**Collection No. W4** For 50 cents we will send 7 Choice Geraniums, both Single and Double, strong, well-rooted plants.

**Collection No. W5** For 50 cents we will send postpaid, 4 Choice Ferns, including the new kinds. Big value for the price.

**Collection No. W6** For 50 cents we will select 8 splendid new Chrysanthemums, no two varieties alike. All labeled.

**Collection No. W7** For 50 cents we will select 6 named Cannas, all labeled, best varieties, and will send you strong plants.

**Collection No. W8** For 50 cents we will send 8 Carnation Pinks, strong plants, best varieties, all labeled. Do not miss this collection.

**Collection No. W9** For 50 cents we will send 7 Violets, best sorts, all labeled.

**Collection No. W10** For 50 cents we will send 1 Coleus, 1 Emerald Feather, 1 Latania Borbonica, 1 Weeping Lantana, 1 Grevillea Robusta and 1 Asparagus Plumosus—6 in all. The greatest value ever offered for the money. Strong plants in each instance.

**Collection No. W11** For 50 cents we will send you post-paid, 6 Tuberous rooted Begonias, single and double varieties. Excellent for beds or pot culture.

**Collection No. W12** For 50 cents we send 8 excellent Pearl Tuberoses, 4 Orange flowered, and 4 new Variegated Leaved, 16 in all; strong, blooming bulbs.

**Collection No. W13** For 50 cents we send 3 strong plants of Calla Lilies, Little Gem, Spotted Calla, Lily of the Nile and the grand new novelty, Yellow Calla. Great value for the money.

**Collection No. W14** For 50 cents we will send 15 new and rare Gladioli, selected from the best varieties. Strong, blooming bulbs, sure to grow and just as sure to bloom.

**Collection No. W15** For 50 cents we send 8 named Dahlias. Strong plants, best varieties, all labeled.

If you order four or more of these 50c collections, we will send you free of charge, your choice of the two great new novelties, Charles Dingee Bush Rose or the Climbing American Beauty, the best hardy Roses in the world. See the colored illustrations of these remarkable Roses in the catalogue.

## Box Collection No. 1

**6** 2-Year-Old Roses **\$2.00**  
by Express

# Hardy June Roses

On own roots. Once Started  
will last a lifetime

Anne de Diesbach, carmine \$0.50  
Countess of Roseberry, pink .50  
Francois Levet, cherry .50  
Gen. Jack, crimson .50  
Gloire Lyonnaise, white .50  
Paul Neyron, pink .50

Regular Price . . . . . \$3.00  
Special Bargain Price . . . \$2.00  
With soil on the roots.

## Box Collection No. 2

**7** Two-Year-Old Hardy  
Everbloom- **\$2.25**  
ing Roses By Express

For those who do not know just what kind is best for a small collection we have made up several collections at ridiculously low cost. They are all standard sorts. All will give an abundance of bloom this season. Safe arrival guaranteed.

Charles Dingee, flesh pink \$0.50  
Radiance, bright pink . . . . .50  
Pink Killarney . . . . .50  
Yellow Killarney . . . . .50  
White Maman Cochet . . . . .40  
Bridesmaid, pink . . . . .40  
Mrs. A. Byass, rosy red . . . .40

Regular price . . . . . \$3.20  
Special Bargain Price . . . \$2.25

## Box Collection No. 3

**12** Two-Year-Old  
Miscellaneous  
**Hardy Roses**  
**\$4.00**

By Express.

Blumenschmidt, yellow . . . \$0.40  
Charles Dingee, pink . . . . .50  
Philadelphia Crimson Rambler . . . . .40  
Francois Levet, pink . . . . .50  
Tausendschon, pink and white Climber . . . . .45  
Killarney, pink . . . . .50  
Yellow Killarney . . . . .50  
Radiance, pink . . . . .50  
Bessie Brown, white . . . . .50  
Mrs. A. Byass, red . . . . .40  
Wm. H. Taft, pink . . . . .50  
Freiherr Von Marshall, red .40

Regular price . . . . . \$5.55  
Special Bargain Price . . . \$4.00

**Regular Price 90c - Special Bargain Price 75c**

# The Cochet Roses, Popular Everywhere

If you want five of the finest Roses listed in this book, which will produce hundreds of superb flowers throughout the growing season, and producing the kind of flowers one never tires of, order this Cochet set. No matter where you live, they will give you perfect satisfaction. The Cochet Roses are perfectly hardy in every part of the country, even where the winters are most severe, with slight protection. In the more temperate sections and in the South they thrive vigorously and bloom most lavishly all summer long, growing into great, strong, lusty bushes which increase in beauty with the passing years.

## Pink Maman Cochet

The Queen of all Pink Garden Roses. The buds are large, full and firm, elegantly pointed, showing depth and richness as they expand. The superb flowers open perfectly double, are extra large and of splendid substance. Hardy in every section of the country; clear rich pink, changing to silvery rose. A variety of the highest merit; one you will not regret planting.

## Red Maman Cochet

(Helen Gould) — A Rose that will grow and give satisfaction in almost any soil or climate. It produces its splendid flowers in amazing profusion, on long, strong shoots. The flowers are very full, perfectly double; buds long and pointed. Color, warm, rosy crimson; hardy everywhere. Bush is absolutely hardy; always in bloom.

## Crimson Maman Cochet

(Etoile de France) — A fitting companion to the other Cochet Roses on account of its vigor of growth, stiffness of foliage, freedom of bloom, and hardness. It bears masses of full, deep-formed flowers singly, on long, substantial stems. The color is a new and clear shade of red or velvety crimson, brightening in center; of exquisite fragrance. One of the most satisfactory Hybrid Teas for garden culture. Perfectly hardy and always in bloom.

Strong, one-year-old plants of Red, Yellow and Crimson Cochet Roses, 20c each; 6 for \$1.00, postpaid. Two-year-old plants, 50c each; \$5.00 per dozen, by express. Still larger specimen or Star size plants, from 6 and 7 inch pots, 75c each.



Bud of Cochet Rose.

## White Maman Cochet

A most magnificent snow-white Rose, with sometimes a faint tinge of pale blush. It has the same freedom of bloom as the Pink Cochet, the same magnificent form of buds and flowers and the same hardiness—standing at the very head of all the Roses as the best white kind for open ground culture. Vigorous as an oak and hardy everywhere. Price of Pink and White Maman Cochet: Strong one-year-old plants, 15c each; 4 for 50c, postpaid. Two-year-old plants, 40c each; \$4.00 per dozen. Still larger, specimen or Star size plants, from 6 and 7 inch pots, 75c each.

## Yellow Maman Cochet

One of the best hardy, everblooming yellow Roses. It is ideal for open ground culture—a typical Cochet Rose, with gracefully molded buds, flowers magnificent when open, on stiff, strong stems. This kind is identical in every way with Pink and White Cochet, except in the color of the flower, which is deep sulphur-yellow.

**Special Offer** One each of Pink, White, Red, Yellow and Crimson Cochet, strong plants, postpaid, for 75c. Two of each, 10 in all, \$1.25. Two-year-old plants, one of each, 5 in all, \$1.75, by express. Still larger or specimen Star size, 75c each; the 5 for \$3.50.

Our Roses are grown in large pots or crocks, which enables you to plant them safely any time during the growing season. Not like the usual nursery stock which is sent you with dry roots, and ten chances to one that they grow. Ours are shipped with the earth attached to the roots, and no risk in planting. We guarantee to deliver them in good growing condition. Few give you such a guarantee.

## Five Superb Hardy Everblooming Roses

Postpaid for 75 Cents

See Colored Photographic Reproduction on Inside Front Cover.

**Regular Price** <sup>25c</sup> *and* <sup>50c</sup> - **Bargain Price** <sup>31c</sup> *and* <sup>43c</sup>

## New and Rare Varieties

The Roses listed on this and the three following pages comprise the best, latest and most beautiful productions of the famous Rosarians, and all lands have contributed to this collection. We have spared no expense or effort in securing them. We offer them only after a careful watching of the habits and adaptability for outdoor culture suitable for our climate. The one-year-old plants are strong and sturdy, while the two-year-old plants are magnificent, strong bushes which will take hold immediately when planted, grow vigorously and bloom profusely. These are the largest and finest Roses ever sold, and are in keeping with the high quality which has made our Roses famous the world over. All grown on their own roots. Not budded, which is the usual kind secured in the new varieties. These are the best of the latest introductions, and have been proven to be just what they are represented. The stock of these new kinds is naturally limited, and orders are filled in rotation in which they are received. We therefore suggest placing your order early for these kinds and we will reserve them for you, and ship when desired or at the proper planting time.

### Red Radiance

(Hybrid Tea)—No Rose has yet equalled, certainly none has excelled Radiance as a garden Rose, when all points are taken into consideration, such as hardiness, freedom of bloom, vigorous growth and character of bloom. In Red Radiance we have an exact replica of its prototype, Radiance, except in color and bud. The color is an even shade of clear red, without a trace of any other color, retaining its vividness for an unusually long time after being cut. It is a remarkable bloomer, being constantly in flower, from early spring until freezing weather. Strong, vigorous, branching grower, each branch terminating in a large, bold, double bloom. Hardy everywhere. Altogether it is a Rose destined to become one of the leading garden Roses of America.

\***MILADY**—A cross between Richmond and J. B. Clark, it has retained the color of both, being a rich velvety crimson, with darker shading toward the center and retaining its color in the expanded bloom. Hardy as Clark in the open ground, and as free a bloomer as Richmond under glass. Buds medium long and opening full and double to the center, producing a magnificent flower, the beauty of which it is almost impossible to describe.

### Souv. de E. Guillard

(Hybrid Tea)—A good yellow Hybrid Tea that is equally adapted for outdoor culture as well as indoor has been difficult to obtain, but at last the rosarian has produced one that we freely recommend for that purpose. A vigorous grower, produces a good bush in a short time, thus being able to withstand the severest weather without injury. Beautiful long pointed buds, opening full and double. Color saffron shaded coppery carmine, and when full open almost entirely yellow. Sweetly scented. Always in bloom.

**WM. NOTTING**—Hybrid Tea. This satisfactory bedding or garden Rose is not known as it should be. Owing to its size and freedom of bloom should be in every garden. Blooms fine, large, full and double with perfect formation. Color a bright rosy cerise, with a deeper center. Fragrant. Hardy and everblooming.



Red Radiance.

### Molly Sharman Crawford

Tea, resembling, however, a Hybrid Tea more than the Tea Rose. It is one of the strongest growing Tea Roses that we have had the pleasure of seeing. The bush is a strong grower, producing a symmetrical form and producing great quantities of the most perfect flowers we have ever seen. The color is a delicate white and we consider it one of the greatest white Roses grown today; in fact, it is almost as white as the driven snow. Flowers full and double and extraordinarily good for cutting purposes, whether grown indoors or out in the open ground; very hardy and will thrive in almost any location.

**GEORGE DICKSON**—Hybrid Tea. Magnificent large, full double blooms of velvety black scarlet crimson with back of petals veined with crimson maroon. Retains its shape and color both before and after cutting. Tea Rose perfume; strong, robust growth.

**BARGAIN PRICES** One-year first size plants, 21c each; 5 for \$1.00, postpaid. Two-year-old plants, 43c each; 6 for \$2.25, by express.

**Regular Price** <sup>25c</sup> <sup>and</sup> <sup>50c</sup> - **Bargain Price** <sup>21c</sup> <sup>and</sup> <sup>43c</sup>

NEW AND RARE VARIETIES—Continued.

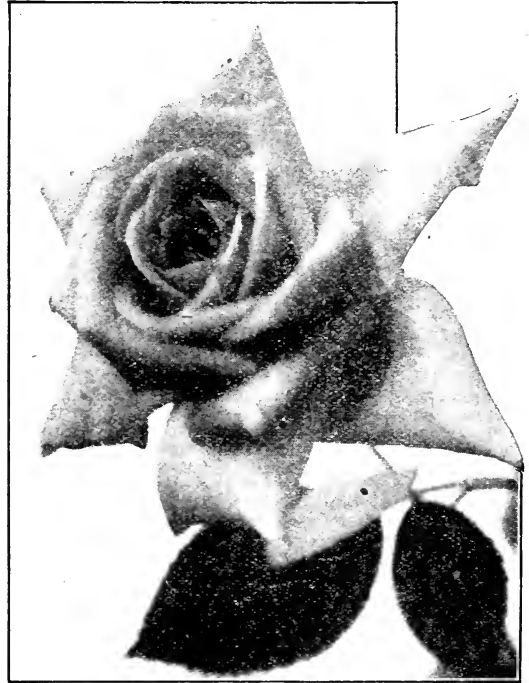
**Mrs. F. F. Thompson**

(Tea)—A sport from the lovely Mrs. Geo. Shawyer, and an exact duplicate, except in color, which is a lovely shade of shell pink, with a deep glowing heart of bright pink, which brightens up the flower wonderfully. Like Shawyer, it is a vigorous grower, and blooming constantly from early Spring until late Fall. Hardy almost everywhere. An excellent one for cutting, as the lovely buds, which are produced on long, stout stems, hold their shape for an unusual length of time after cutting, and opening into such immense, full and double blooms, with petals of good substance.

**EDGAR M. BURNETT**—Very large, full flowers of splendid form with large flesh-colored petals tinted rose; an advance on the type of Rose of which the beautiful Lady Alice Stanley is a representative; one of the sweetest scented Roses in existence, even surpassing "La France" in this respect. Awarded gold medal, National Rose Society of England.

**PRIMA DONNA**—A Hybrid Tea. Claimed to be one of the strongest growing Hybrid Tea Roses in cultivation, and as free a bloomer as Killarney. Color a deep rose-pink, petals waved or undulated on the edges, giving it an elegance of form seen in no other Rose. Good for forcing or outdoor growing.

**GEORGE ARENDS**—Hybrid Perpetual. Very vigorous grower, extremely hardy and one of the most satisfactory of the Hardy Hybrid Perpetual class. The color is a delicate rose, deliciously fragrant. Almost as sweet as American Beauty. Enormous blooms.



Mrs. F. F. Thompson.

**\* Ophelia**

This new Hybrid Tea Rose has the brightest future, in our estimation, of any Rose introduced for the last quarter century. The color is one so difficult to describe that any description can only be a partial one, and gives but a faint idea of the superb beauty and richness of the shades. Salmon-flesh, shaded with rose. Buds of unusual attractiveness, opening full and double. Habit excellent, growth strong produces flowers on long stems, standing well up above the foliage, and in great profusion all summer.

**MRS. ANDREW CARNEGIE (Hybrid Tea)**— Sometimes called an Everblooming Frau Karl Druschki. Awarded a Gold Medal by the National Rose Society, and won a host of admirers wherever shown. Owing to its resemblance to the Frau Karl Druschki it has been termed by some as an Everblooming Druschki. Flowers are almost perfect in form, with a high center, and immense size. Blooms all the time. Good, robust grower. Hardy everywhere. Color almost a snow-white, but sometimes showing a slight lemon tint. Delightfully fragrant.

**ECARLATE (Hybrid Tea)**—One of the grandest for outdoor blooming of this class. Color a solid, brilliant scarlet. Profuse bloomer, strong, sturdy grower. Exceptionally fine for bedding purposes.

**BARGAIN PRICES** First size one-year plants, 21c each; 5 for \$1.00, postpaid. Two-year-old plants, 43c each; 6 for \$2.25, by express.



Ophelia.

# THE NATIONAL COLLECTION

of

## New Hardy Everblooming Roses

**NATIONAL EMBLEM (Hybrid Tea)**—Owing to its magnificent color and formation this Rose was named National Emblem and no Rose in our estimation has a better right to the honor of being the Standard Bearer. Its Color is a deep crimson overlaid velvety crimson shading to vermilion toward the edges. Buds long and pointed on stout stems opening full and double, each one coming to perfection and produced in marvelous profusion throughout the entire season. Plants make a gorgeous sight owing to the brightness of the blooms and the luster of the foliage, being entirely free from mildew. A grand garden or bedding rose. **Price, first size plants, 30c each, postpaid. Two-year-old plants, 75c each, by express collect.**

**ALEXANDER HILL GRAY (Tea)**—After a thorough trial both indoors under glass and in the open ground we are pleased to offer this lovely yellow rose to our customers as one of the very best of its class and color. The color which is a deep lemon yellow deepening as the flower expands; does not fade in the open ground, as is usual with such. Buds and blooms of perfect formation and of great substance, and produced in the greatest abundance throughout the entire season. Strong grower and hardy everywhere. Awarded Gold Medal by National Rose Society. **Price, first size one-year plants, 25c each; 5 for \$1.00, postpaid. Two-year-old plants, 50c each, by express.**

**MRS. GEORGE SHAWYER (Tea Rose)**—This is one of the newer varieties introduced by the growers of Lady Hillingdon. We have not seen a Rose that has met with such universal appreciation by both the amateur and professional grower, and has won awards in this country and Europe. The color is one very hard to describe, being a shade of brilliant clear rose or bright peach-pink. It is a wonderful grower and bloomer, producing great numbers of strong shoots, each tipped with a bud. These shoots form the stem, from 3 to 4 feet in length. The flowers are very large, well formed and full, petals of good substance. A very fine garden Rose, as well as a forcing Rose. **Price, of strong pot-grown plants, 25c each. Two-year-old plants, 50c each. The stock is grown on own roots.**



National Emblem.

**Special Offer** One each of the three superb varieties offered above sent postpaid in first size plants, 75c. One each in large 2-year-old plants sent by express for \$1.50. All on their own roots. Order as "National Collection."

## "Garden" Set, 60c Seven Hardy, Everblooming Roses

Almost a Complete Rose Garden.

This immensely popular collection embraces the very best hardy garden Roses. Flowers can be cut in abundance this year.

**PINK LA FRANCE**—Magnificent, large, full and double silvery-pink flowers.

**MARIE GUILLOT**—A queen among white Roses. Large, full, finely formed flowers.

**METEOR**—Rich, velvety crimson; buds and flowers large, full and double.

**HENRY M. STANLEY**—Beautiful double flowers tinted amber-rose and apricot-yellow.

**MAD. ABEL CHATENAY**—Immense, full, double flowers; rosy carmine, shading darker.

**WHITE MAMAN COCHET**—The premier white garden Rose. Absolutely none better.

**COQUETTE DE LYON**—Large, finely formed flowers of canary-yellow color.

**Special Offer** One each, strong plants, seven Garden Roses described above, sent postpaid for 60c, the full seven in two-year-old plants for \$2.25, by express.

Bonita, Texas, Nov. 7, 1916.  
Sirs:—My daughter in Colorado ordered one White Climbing Rose sent to me and I received it in due time, and I want to say it was the finest looking plant to be sent so far I ever saw. It looked like it had just been taken up. I thank you very much for your promptness and the care taken in sending it. Very truly,  
MRS. LULY C. CURE.

East Herkimer, N. Y.,  
December 11, 1916.  
Dear Sirs:—The Roses I got from you were in good shape last May of this year, and grew to a height of from 8 inches to 2 feet. I collected plenty of Roses during the growing season, and they are doing fine.  
Yours truly, RALPH NIELSON.

Germantown, Pa., Jan. 7, 1917.  
Sirs:—I got some Roses of you last summer and they have done fine. I was just looking at them today how they were standing the Winter. They were doing fine. They were still green. I did not put anything around them but covered up their roots.  
Yours respectfully,  
F. WALSH.

**Regular Price** <sup>20c</sup> *and* <sup>50c</sup> - **Bargain Price** <sup>16c</sup> *and* <sup>43c</sup>

## Hybrid Tea Roses

Hybrid Tea Roses are becoming more popular every year owing to their blooming qualities, size of bloom and fragrance. This class combines the continuous-blooming quality of the Everblooming Teas and the sturdy strength of the Hybrid Perpetuals. The plants bloom from the first year like the Teas, bearing large, finely formed flowers of a wondrous range of color, with the fragrance of the June Roses. They are especially valuable to Northern planters because they stand the severest winters with ordinary protection and, of course, luxuriantly in the South. In all sections they form magnificent bushes, bearing all summer through great masses of the most beautiful Roses imaginable. They are without exception the greatest of all garden Roses. Our stock is all on its own roots—don't buy the other kind, budded and grafted. This is important if you wish satisfactory returns. We offer strong, lusty plants in all sizes.

### Madam Segond Weber

One of the most beautiful Roses of recent introduction. The long, pointed buds are pink or salmon-flesh and when fully expanded are immense in size, full and double; as the flower opens it deepens until it fairly glows with its warm deep pink. Highly fragrant. Very hardy and constantly in bloom.

**\*BESSIE BROWN**—This magnificent Rose, introduced here from Europe, has unsurpassed beauty of a totally distinct character, bearing large, full, deep and double flowers, on strong, erect stems. The plants are hardy and vigorous, producing flowers profusely in the open ground all through the summer. The color is almost pure white, though sometimes flushed with pink; petals large and of fine form.

**MRS. A. R. WADDELL**—This is one of the most beautiful Hybrid Tea Roses in bud and flower of any grown. The flowers are of the largest size, of perfect form, and possessing wonderful keeping qualities. The coloring is most brilliant in effect, being rosy-scarlet, opening rosy-salmon, with reverse of petals rosy-scarlet. The bush is a sturdy, erect and vigorous grower, requiring but little care.

**\*MME. LEON PAIN**—Silvery salmon, with orange-yellow center.

**\*PRINCE OF BULGARIA**—This magnificent Rose has been well recommended by hundreds of our customers, and we have grown an extra large stock in order that we might give it the wider distribution which its merits cause it to deserve. Not the least of its charms is the large, bright green foliage, and the buds are simply grand. The flowers are large and quite full; outer petals rosy flesh with the index of the petals of a slightly lighter tint. This wonderful Rose, of great beauty and fragrance, will be enjoyed by the owners of West Grove Rose gardens throughout the United States.

**MRS. HERBERT STEVENS**—A new hardy Tea Rose of extraordinary merit. The bloom is as long, and even more pointed than the Maman Cochet, being faultless in shape and form. Color white, with a distinct fawn and peach shading toward the center. Perfectly hardy in all localities, and the extraordinary blooming quality of this Rose, being practically always in bloom.

**\*MARY COUNTESS OF ILCHESTER**—A strong, vigorous Hybrid Tea. Color warm crimson-carmine, a color almost indescribable. Flowers produced on long, upright stems, of immense size, with large, smooth, circular petals. The foliage is attractive and handsome, a deep green. Very highly scented.

**\*NATALIE BOTTNER**—New yellow Hybrid Tea. Blooms of bright lemon yellow, borne on long, stiff stems. Very vigorous and free blooming. Blooms resemble the famous Kaiserin Augusta Victoria, and if you will imagine a bloom of this size, only being lemon-yellow, it is bound to become one of the most popular yellow Hybrid Tea Roses in existence. Hardy.

**BARGAIN PRICES** One-year first size plants, 16c each; 3 for 45c, postpaid. Two-year-old plants, 43c each; 6 for \$2.25, by express. Varieties marked \* 75c each for large specimen plants.



Rose Mad. Segond Weber.

### \*Helena Cambier

Of unusual beauty, with large, double, beautifully formed flowers, the colors are varying, ranging from salmon-rose to coppery-rose; very often a handsome saffron hue. As the flowers expand, the colors become lighter. A most remarkable sort in every respect and one to which we give our highest endorsement. Good everywhere, especially in the South.

# Regular Price <sup>20c</sup> and <sup>50c</sup> - Bargain Price <sup>16c</sup> and <sup>43c</sup>

HYBRID TEAS—Continued.

## \* Rena Robbins

This remarkable new Hybrid Tea Rose is one that will create a sensation wherever grown. The flowers are simply immense in size, a beautiful, clear white or tinted lemon, with the color running to a beautiful shade of orange in the center. Buds are magnificent in formation and color. Flowers produced on long, stiff stems and excellent for cutting. Always blooming. One of the best.

**MRS. AARON WARD**—One of the newest of all Yellow Hybrid Tea Roses, and distinctly beautiful in form and color. The color ranges from coppery orange in the opening bud, changing to golden orange, and when the flower is fully open it is a lovely shade of pinkish fawn. Most vigorous in growth, every shoot producing a flower and clothed with dark, glossy green foliage, maroon on under side. It is one of the best of the new yellow Roses, and bound to become very popular.

\***METEOR**—Very few dark Roses compare with this in richness and depth of color, which is a rich, velvety crimson, shading very dark in the depths of the petals. The buds and flowers are remarkably large and of elegant form, full and double. As a garden Rose it has few equals, being particularly valuable for bedding on account of its sturdy growth and handsome foliage. It is also valuable for growing indoors in pots or in the conservatory, and is constantly in bloom.

**MRS. DUDLEY CROSS**—In color, a pale chamois, or light yellow faintly flushed with rose; in strength, hardiness and vigor of growth not surpassed by any known Rose, and growing to perfection in the garden. The flowers are of splendid substance, borne continuously on long, stiff stems, and for cutting it is most valuable. Bears its handsome flowers in great profusion all summer through.

\***MAD. SCHWALLER**—A beautiful combination of salmon-rose with edges of the petals touched with violet carmine. One of the most fragrant of all Roses. Strong grower, forming a handsome bush, and constantly in bloom.

## Laurent Carle

**LAURANT CARLE**—A beautiful Rose, with extra large, handsomely formed, rich velvety carmine buds and flowers. It is a phenomenally strong and robust grower, hardy in every locality and continually in bloom. Every lover of Roses should have this variety.

\***PINK LA FRANCE**—Exceedingly sweet and handsome; flowers and buds large size, color lovely shade of silvery pink, tinged with crimson; fragrance delicious; flowers very full and beautiful. It commences to bloom soon after planting and continues until frost; hardy with protection.

\***WHITE LA FRANCE (Augustine Guinoisseau)**—A pure white member of the La France family, having just a tinge of rose-blush tint, which grows stronger in the depths of the petals.



The Lovely Rena Robbins.

## \* Mad. Abel Chatenay

Grand New Perpetual-Blooming Rose.

This splendid Rose is one of the very best of its color—rosy-carmine, with darker shade. It does remarkably well in the open ground, has wonderfully beautiful flowers, which are full, deep and double. A very hardy Rose, Chatenay is a strong grower and free bloomer and has won friends wherever it has been planted. We have a large stock of superior quality, and urgently recommend all our customers to include Mad. Abel Chatenay in their Rose orders for this spring.

**Bargain Price** One-year first size plants, 16c each; 3 for 45c, postpaid. Two-year-old plants, 43c each; 6 for \$2.25, by express. Varieties marked \* furnished in 3-year-old plants at 75c each, by express.

**START RIGHT BY PLANTING  
OWN ROOT STOCK**



**Regular Price** <sup>20c</sup> <sup>and</sup> <sup>50c</sup> - **Bargain Price** <sup>16c</sup> <sup>and</sup> <sup>43c</sup>

HYBRID TEAS—Continued.

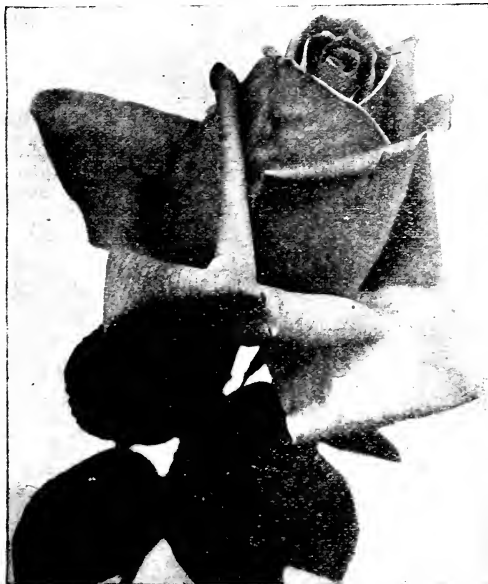
**\* Jonkheer J. L. Mock**

Hybrid Tea called the Giant Pink from Holland, owing to the enormous blooms it produces. Of distinctive merit, being an extremely strong, rank grower, one of the strongest of the Hybrid Tea class, blooming as it does with the greatest freedom, the buds carried on long, stiff, erect stems, of the very largest size imaginable in a Rose bloom, and will retain its perfect formation. Very fragrant. Color clear imperial pink on the order of the *La France*. This Rose has produced a sensation wherever grown. We offer strong plants, on their own roots.

**\*RICHMOND**—The most gorgeous Rose we have ever seen—no other variety can compare with it. In form and fragrance of flower it is simply superb. Wonderfully free blooming, its immense fragrant, scarlet-crimson flowers are borne on long, stiff stems, making it a rival of American Beauty, and even more dazzling in appearance. Considered the standard deep crimson Rose in the florists' shops, selling at all times for high prices. In the garden its flowers are as fine as those found in the greenhouses. Perfectly hardy.

**\*MME. MELANIE SOUPERT**—The flowers are bright golden-yellow suffused with faint tinges of pink, with a handsome and distinct form, making a Rose of great beauty. It is a strong, vigorous grower, very hardy, and forms a handsome bush in the garden. Fine large blooms of perfectly double formation.

**\*WELLESLEY**—A most magnificent garden Rose of a beautiful shade of pink, vigorous, healthy grower; remarkably free flowering, with fine keeping qualities; most valuable Rose for gardens, as it is particularly adapted for outdoor culture. Blooms profusely on long stiff stems.



Jonkheer J. L. Mock.

**\* Kaiserin Augusta Victoria**

The greatest hardy, white Hybrid Tea Rose. A strong, sturdy grower; free-flowering; it has become the most popular of all white Roses for general planting. Continuously from early spring until late fall, with pointed buds, the large, double flowers are glorious in their perfection; borne on long, stiff stems; delicate pure white, deliciously fragrant. Unexcelled for cutting; absolutely hardy. Although grown extensively under glass, it is essentially a garden Rose. There is nothing finer than this glorious Rose.

**\*SUNBURST**—A magnificent giant yellow forcing Rose, also well adapted for outdoor growing, being a vigorous and healthy Rose. Buds long and pointed, borne singly on long, stout stems, opening full and double. An excellent cut flower variety, having excellent keeping qualities. A very vigorous grower, reddish bronze foliage. The color is superb orange copper or golden orange, with a deep orange center. This Rose creates a sensation wherever grown.

**\*ETOILE DE FRANCE**—One of the best and sweetest hardy Hybrid Tea Roses of its color. The strong, upright bushes have beautiful bronze green foliage which is not subject to insect attacks. The bushes are blooming constantly, producing large, massive, deep, full cup-formed flowers on magnificent, long stems. They are of truly glorious form and delightful fragrance, while the color is exquisite—a clear red or velvety crimson.



Kaiserin Augusta Victoria.

Own Root Plants are the only kind to plant for permanent results.

**BARGAIN PRICES** One-year first size plants, 16c each; 3 for 45c, postpaid. Two-year-old plants, 43c each; 6 for \$2.25, by express. Varieties marked \* furnished in large specimen plants at 75c each, by express.

**Regular Price** <sup>20c</sup> and <sup>50c</sup> - **Bargain Price** <sup>16c</sup> and <sup>43c</sup>

HYBRID TEAS—Continued.

**\*Rhea Reid**

A Magnificent New Crimson Garden Rose.

"As large as American Beauty, as double as La France and as red as Richmond," is the enthusiastic way the originator describes this beautiful new Hybrid Tea Bush Rose. The color is vivid scarlet-crimson, and the flowers are marvels of beauty, larger, bold and of splendid substance. It has a strong, disease-resisting constitution, makes a rapid growth and throws up a profusion of canes from the roots and is always blooming. As an all-around garden bush Rose it has no superior.

**\*MAGNAFRANO**—One of the grandest Roses in cultivation. The flowers are very large, full, deep and double, and of delightful fragrance. The color of this magnificent Rose is bright, shining rose, with rich shadings of deeper tones. It forms a strong, sturdy, upright bush, bearing its gorgeous flowers on long, stiff stems, making it especially valuable for cutting.

**\*VIRGINIA R. COXE**—For intense and dazzling color there is no other Rose to compare with this splendid kind. The flowers are large and handsome, moderately double, of splendid substance, and are produced in amazing profusion during the whole growing season; in fact, it is always in bloom. The color is a fiery crimson, shaded with a dark velvety sheen, a combination found in no other Rose. The fragrance of Virginia R. Coxe Rose is unexcelled by that of any other variety under cultivation. It is a strong and sturdy grower, often attaining a height of four to five feet, is perfectly hardy in all sections and is one of the finest of many splendid Roses that have come to us from Europe.

**\*COL. R. S. WILLIAMSON**—Large, fragrant flowers of an exquisite shade of soft, rich carmine; blooms large and well formed, with

high pointed center, on long, stiff stems. Petals crinkled, on the order of a Zinnia. Tall grower. Hardy in all localities, and strong, robust grower, soon producing a handsome bush. Blooms all summer. A valuable addition to the Rose garden.

Rhea Reid.

**\*Radiance**

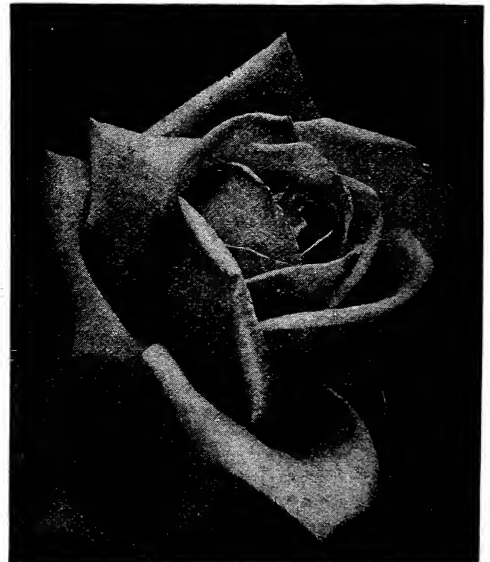
A glorious new extra hardy Hybrid Tea Rose which originated within a few miles of West Grove. Awarded Silver Medal by the American Rose Society as the best bedding Rose at the Hartford, Conn., gardens the past season. The

flowers are a beautiful blending of shades of carmine-rose, with opal and coppery reflections. It is of splendid, sturdy growth, constantly in bloom, and is bound to become one of the leading garden Roses. We cannot say too much in its praise.

**\*TRIUMPH DE PERNET PERE**—A French Rose, originated by Jean Pernet, of France. Flowers large, with broad, thick petals, and long pointed buds. Delicious Tea fragrance. Clear magenta-red, passing to bright crimson.

**EDWARD MAWLEY**—It is an enormous big-petaled Rose, much larger than the *Melanie Soupert*, a Rose which it resembles in form, and the beautiful rich color of *Louis Van Houtte*, only with a more velvety shading upon the inside of the petals. This Rose has been awarded the gold medal of the National Rose Society. Very free blooming, with a perfect habit of growth, suitable for garden, exhibition or forcing purposes. Hardy anywhere.

**BARGAIN PRICES** One-year first size plants, 16c each; 3 for 45c, postpaid. Two-year-old plants, 43c each; 6 for \$2.25, by express. Varieties marked \* furnished in large specimen plants, 75c each, by express.



Radiance.

**Regular Price** <sup>15c</sup> and <sup>40c</sup> - **Bargain Price** <sup>12½c</sup> and <sup>33c</sup>



## Hardy Everblooming Tea Roses

Tea Roses form the foundation of nearly all the great Roses of today. Without them, the lovely Hybrid Tea class would be impossible. They are among the oldest and most highly cherished of all Roses. They have made the Rose-gardens of America what they are. Their place and value is everlasting. Rugged, healthy and hardy in growth, free blooming (they bloom all the time), their flowers are chaste and beautiful. You cannot well do without them. They thrive gloriously in all sections of the country.

Their ease of propagation has, unfortunately, caused them to be produced by some growers in enormous quantities to meet a certain demand for "Cheap Roses," and these so-called cheap Roses have brought untold disappointment to all who have planted them, and have discredited the business of every first-class Rose dealer. Don't be misled into buying the cheap, "one-eyed," "thumb-pot" Rose plants made to sell at popular prices. **Plant good Roses**, grown by a firm with a reputation to sustain. Pay a fair price for first-class goods, with a guarantee back of them—the West Grove kind—and you will soon become a Rose enthusiast. Ours is the greatest collection of **own-root** Roses in the world. This collection of hardy, everblooming Tea Roses is the very life of our immense list. To the beginner—the novice in Rose culture—the great number of varieties may be confusing, but to eliminate a single one, however, would do a distinct injustice to the introducer and to our collection, for each variety has its own particular charm and merit. If you find it difficult to make a choice, leave the selection to us.

**Bargain Price** One-year first size plants, 12½c each; 3 for 35c, postpaid. Two-year-old plants, 33c each; 6 for \$1.75, by express. Varieties marked \* furnished in large specimen plants at 75c each, by express.

### \*The Bride

There is no other white Rose more satisfactory than The Bride. When planted in the open ground, the flowers are sometimes found to be delicately tinted with pink, making it exceedingly attractive. The buds and flowers are unusually large, well-formed and deliciously perfumed.

\***BLUMENSCHMIDT**—A splendid bedding Rose of the Cochet type, glowing all summer with its wealth of citron-yellow flowers, each petal of which is edged with dainty rose. The individual flowers are large and well-formed, resembling in many ways some of the handsomest Tea Roses.

**BOUGERE**—This is a fine variety for open-ground culture. Large, full and double flowers supported on long, stiff stems and produced in great abundance all-through the growing season; color bronze-rose or violet-crimson, shaded with lilac.

**BURBANK**—A rival of Champion of the World, bearing a great profusion of large crimson flowers; very fragrant.

### \*Bridesmaid

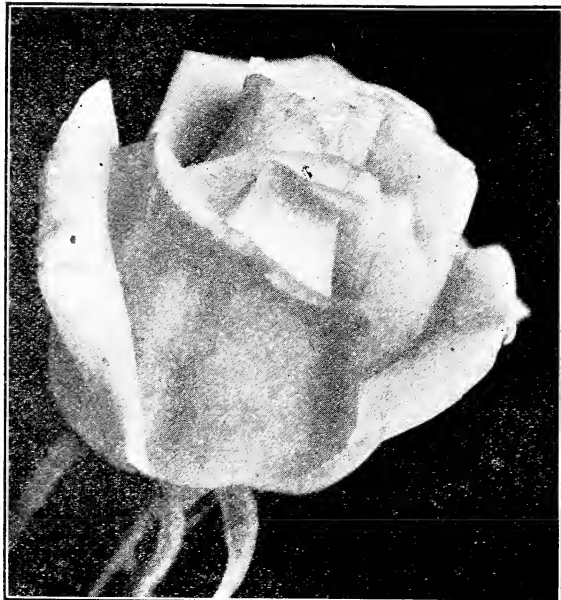
This variety is valuable for cutting and does finely in the open ground; a sport from the old and popular pink Tea, Catherine Mermet, but of a fine, clear, dark pink, much deeper and more constant in color than Mermet.

\***DUCHESS DE BRABANT**—A very vigorous and healthy variety, producing large blossoms which are beautiful in buds or open flower. The color is a fine shade of soft, rosy pink, which deepens to bright rose. A special favorite.

\***COQUETTE DE LYON**—This is one of the best yellow Tea Roses for open-ground culture. The flowers are extra large, deep and double; color pure canary-yellow. Unlike other yellow Roses, it is a strong, vigorous grower.

**THE QUEEN**—Of vigorous and healthy growth, sweetly scented. A constant bloomer, producing profuse crops of buds and flowers; the buds are well-shaped, with large petals of best substance. White.

**Regular Price** <sup>15c</sup> and <sup>40c</sup> - **Bargain Price** <sup>12½c</sup> and <sup>33c</sup>



Marie Guillot.

## \*Marie Van Houtte

It is a strong and sturdy grower, blooming constantly, with great freedom. The color of the flowers, which are large, full and double, is pale canary-yellow, passing to rich, creamy white, shaded with pale rose.

\***MADAM HEINTZ**—Lovely double saffron-yellow flowers, slightly shaded with carmine. Very free flowering; blooms can be cut almost daily during the growing season. A very vigorous grower and hardy.

\***MRS. B. R. CANT**—This new Rose is an extremely strong-growing variety, producing heavy stems, with large, healthy foliage and flowers almost the equal and style of Helen Gould, but more double; deep rose, with silvery rose center. A bright, clear garden Rose, and a prolific bloomer, especially good for outdoor cultivation. Delightfully fragrant.

**LADY MARY CORRY**—A profuse bloomer, bearing deep, golden yellow flowers of fine size.

\***WM. R. SMITH**—Especially suited for outdoor planting and cutting purposes. The soft blending of the salmon-pinks, rose-pinks, and the magnificent flesh tints resemble the blush of a maiden's cheek. The flowers are large, full and double, and most exquisitely formed. The petals are so firm they look like wax. Perfect buds. The flowers are borne on long, strong stems, just right for making bouquets.

**Bargain Price** One-year first size plants, 12½c each; 3 for 35c, postpaid. Two-year-old plants, 33c each; 6 for \$1.75, by express. Varieties marked \* furnished in large specimen plants, 75c each, by express.

HARDY EVERBLOOMING TEA ROSES—Continued.

## \*Marie Guillot

The Queen of White Roses.

We recommend it as one of the most reliable white Tea Roses in cultivation, especially for outdoor culture. The color is pure white, sometimes faintly tinged pale yellow. The flowers are beautifully made, very large, full and double; the buds are very pretty, of sweet fragrance. Anyone who has not seen this splendid variety growing at its best in the open ground cannot conceive of its large, bold, handsome flowers.

**GENERAL DE TARTAS**—This Rose has no superior for bedding purposes, producing large-sized flowers which are full and fragrant. It is of good habit, and an excellent Rose in every way. The color is a brilliant carmine, deeply shaded with violet-purple, oftentimes tinged with buff.

\***FREIHERR VON MARSCHALL**—As an outdoor Rose it has no superior. It has wonderfully beautiful foliage and produces large, full, beautifully shaped flowers, which are borne in profusion all through the season. The color is bright red, one of the best red Tea Roses that is known.

**HELEN GOOD**—Valuable for garden culture. The color is pale yellow, mixed with pink, each petal edged deeper. Very pure and beautiful.

**MADAME DE VATRY**—The flowers are a rich crimson-scarlet, bright and beautiful. Of good form, both in bud and flower, and well-scented. A choice Rose.



Marie Van Houtte.

**Regular Price** <sup>15c</sup> and <sup>40c</sup> - **Bargain Price** <sup>12½c</sup> and <sup>33c</sup>



Bon Silene and Etoile de Lyon.

## \*Etoile de Lyon

It is of vigorous, sturdy growth, and seems able to resist heat and cold equally well. It blooms freely, producing beautifully formed flowers of a rich golden yellow. A great favorite everywhere.

**LADY HILLINGDON**—One of the latest introductions of the Tea class, and has taken the medal over all yellow Roses, the color being one almost beyond description, apricot-yellow shaded to orange on the outer edge of the petal, becoming deeper and more intense toward the center of the bloom.

**BARGAIN PRICES** One-year first-size plants, 12½ cts. each, three for 35 cts., postpaid; 2-year-old plants, 33 cts. each, six for \$1.75, by express. Varieties marked (\*) furnished in large specimen plants, 75 cts. each, by express.

## \*Bon Silene

A Grand Old Rose

The color is deep rose, changing to pale light rose. This variety cannot be surpassed for bouquets and decorative purposes. In the open ground it grows to perfection, producing large crops of beautiful flowers from early spring until late autumn. One of the favorites of the old-time gardens.

\***ALINE SISLEY**—One of the best. Rich shade of violet-red, brightened with crimson-maroon; flowers large, full and double; fragrance very sweet.

**DEVONIENSIS (The Charming Magnolia Rose)**—Planted outdoors, it produces an abundance of large, very full and double flowers all through the season.

The color is creamy white, with rosy centers and very fragrant.

\***ISABELLA SPRUNT**—This golden yellow Rose has been known as a favorite for over twenty years. A free bloomer, producing flowers of bright canary-yellow, sweetly scented.

\***SAFRANO**—Valued very highly for its beautiful buds and handsome flowers. The color is a bright apricot-yellow, passing to orange and fawn, sometimes tinted with rose. A splendid old-time Rose that has never been replaced by any newcomer of its class or color. It is a variety especially adapted to outdoor planting; vigorous, healthy; blooms all summer.

\***PAPA GONTIER**—A strong, vigorous grower and constant bloomer; one of the very best and most valuable, both for open ground and greenhouse; color rich cherry-red, passing to clear, glowing crimson. One of the best for all purposes, with immense buds and magnificent flowers.

\***MAD. FRANCISKA KRUGER**—Of strong and vigorous growth, and a constant bloomer, which is especially suited to bedding or massing. The flowers are deeply shaded coppery yellow in color, and are of large size.

\***SOUVENIR DE FRANCOIS GAULAIN**—The color is unusually bright, and quite remarkable for a Tea Rose—rich, velvety crimson; the flowers are very fragrant, large, full and very double, possessing a depth that makes their color all the more attractive; quite hardy, healthy and strong. A Rose of great value to the home grower. The strong, healthy plants are quite hardy.

**PRINCESS BONNIE**—The brightest, sweetest and freest-blooming Rose in existence. Color solid crimson, deeper and more vivid than "Jack." Fragrance far sweeter than La France. Always blooming.

**PERLE DES JARDINS (Pearl of the Garden)**—The color is a clear golden-yellow, of a beautiful shade, and is entirely distinct from any other variety; the flowers are large, full, of globular form, with great depth and substance, richly perfumed, and very beautiful in every way.

**Regular Price** <sup>15c</sup> <sub>and</sub> <sub>40c</sub> - **Bargain Price**

<sup>12 1-2c</sup>  
<sub>and</sub>  
<sub>33c</sub>

## The Famous Soupert Roses

### Always Blooming

These famous Roses will give absolute satisfaction to every purchaser. They bloom the first year and will be in bloom every year from early May until severe freezing weather. More than once we have seen them bloom in open ground after a severe snowstorm. There are no Roses like them; certainly none better. If you try them, take our word for it, you will not be disappointed.

**BARGAIN PRICES** One-year first size plants, 12½c each; 3 for 35c, postpaid. Two-year old plants, 33c each; 6 for \$1.75, by express. Varieties marked \* furnished in specimen plants, 75c each.

### \*Clotilde Soupert

Known the world over as one of the very best of all bedding Roses. A strong, dwarf grower and a truly wonderful bloomer, producing clusters after clusters of the finest formed flowers.

Full and double, and deliciously sweet. The color effect is beautiful — ivory-white shading toward the center to silvery rose.

\***RED SOU-  
PERT (Ma Pe-  
tite Andree)**—  
An unusually  
strong grower,  
dwarf and  
compact, pro-  
ducing large,

full, double flowers in amazing profusion. Color brilliant crimson. This is the original variety, and it is still the first and best of its class.

\***PINK SOU-  
PERT**—Identical with Clotilde Soupert, except in color of flower, which is clear, lively pink and at a distance resembles a carnation. Has the same stocky, sturdy habit of growth, blooms as freely, with large, handsome flowers; same form as Clotilde Soupert.

**YELLOW SOU-  
PERT (Mosella)**—The flowers are very double, and of the same camellia-like form as Clotilde Soupert, and are produced in immense clusters; buds exceedingly dainty. A strong, upright, bushy grower. Color white, on beautiful, light, yellow ground; center chrome-yellow.

**WHITE SOU-  
PERT (Clotilde Pfitzer)**—The genuine White Soupert. Identical in every way with Clotilde Soupert, except in color, which is ivory-white. Free blooming and hardy.

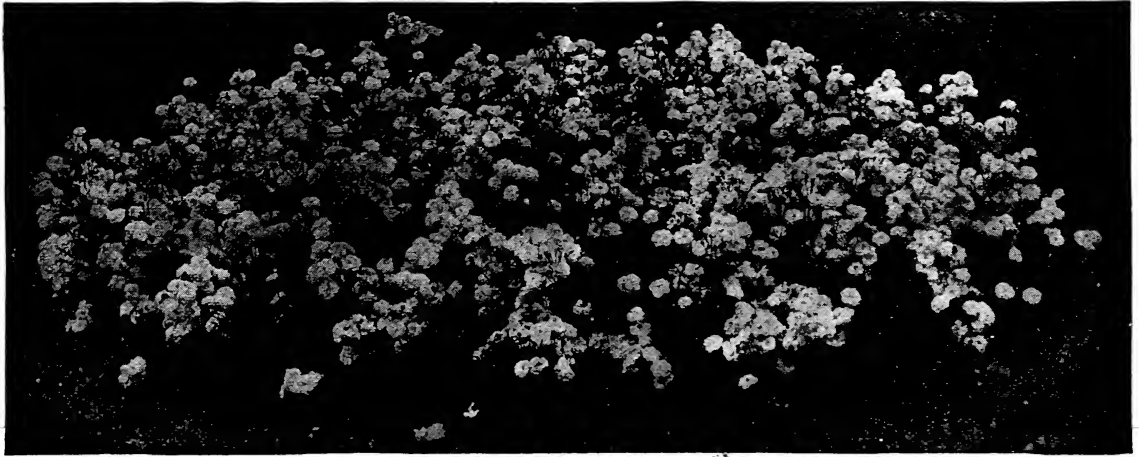


### Special Offer of Soupert Roses

One each of the five beautiful Soupert Roses, one-year plants, five in all, 60c. Two-year plants, five in all, \$1.60, by express.

The Soupert Roses have a Permanent Place among other Garden Roses, Clotilde Soupert has no Superior.

**Regular Price** <sup>20c</sup> and <sup>45c</sup> - **Bargain Price** <sup>16c</sup> and <sup>40c</sup>



For Permanent Beds the Baby Ramblers are unsurpassed.

## Dwarf or Baby Rambler Roses

**THE FAMOUS CRIMSON BABY RAMBLER**—One of the most useful and ornamental Roses yet introduced. It blooms in immense clusters similar to Crimson Rambler, every day in the year, but grows only 20 inches high. Better than an azalea, it is superb for single specimens, dwarf hedges and for bedding. The color is clear and brilliant ruby-red; foliage dark and glossy. Free from insects and absolutely hardy everywhere.

**THE LOVELY ANNY MULLER**—This Rose is very much the same as the Crimson Baby Rambler, except in the color of the flowers, which are a shiny and brilliant pink, produced in the greatest profusion in large clusters. It is a splendid companion for the other excellent members of this family.

**DOUBLE WHITE BABY RAMBLER**—A most beautiful companion to the Crimson Baby Rambler, growing to the same height, and bearing great masses of double, pure white flowers, covering the plant as with a mantle. The Roses are delightfully scented, reminding one somewhat of a hyacinth.

**BABY TAUSENDSCHON**—A dwarf form of the Climbing Tausendschon or Thousand Beauties. It has all the characteristics of the climber in the charm of its flowers but blooming the entire season. Flowers firm, white, delicately flushed pink, changing to deep rosy-carmine.

**MRS. WM. CUTBUSH**—Of dwarf growth, producing in constant profusion flowers of pale pink, borne in huge trusses throughout the entire summer and autumn. Hardy.

**JESSIE**—Of all the "Baby Ramblers," this new variety bids fair to outstrip the others in popularity. The flowers are of a brilliant crimson, much the color of a Richmond Rose and are borne in huge clusters from early in the season until frost.

**PHYLIS**—Considered by many to be the most popular of the Pink Baby Ramblers. The color is the shade of the Lawson Carnation—beautiful carmine-pink. Grows to a height of two feet; very hardy; always in bloom; flowers are produced in continuous succession in large clusters.

**ORLEANS**—The most attractive of all the Baby Rambler Roses. A very rapid grower, soon producing a bush resembling a huge bouquet of brilliant geranium-red flowers, suffused rose, with a rosy-white center.

**YELLOW BABY RAMBLER**—Similar in habit of growth to the other Baby Ramblers, but of a lemon-yellow. Makes a beautiful contrast with the others.

**GEO. ELGER**—A superb Polyantha Rose with just sufficient of Tea Rose blood to make it different from any in its class. It produces great quantities of lovely little buds of golden-yellow, opening into miniature symmetrical Roses. Each bush is so loaded with blooms that they resemble a huge bouquet. Like all Roses of this class it is free in growth and bloom, blooming all summer. Hardy everywhere with some protection. Foliage bright attractive green. Excellent companion for the Baby Ramblers.

**Special Offer** One each of the 10 Baby Ramblers offered on this page in first size one-year plants sent postpaid for \$1.40. One each in two-year-old plants sent by express for \$3.50. Order as the "Baby Rambler Collection."

These roses are the ones used most frequently for borders along walks or around beds. Always in bloom; perfectly hardy in all localities. May be used also as specimen plants. Foliage always dark glossy green, which makes them very attractive.

**Bargain Price** One-year first size plants, 16c each; 3 for 45c, postpaid. Two-year-old plants, 40c each; 6 for \$2.25, by express.

**Regular Price** <sup>20c</sup> and <sup>50c</sup> - **Bargain Price** <sup>16c</sup> and <sup>43c</sup>

# The Favorites of Grandmother's Garden

## The June Roses

There is little question that Hybrid Perpetual Roses, or "June Roses," as they are sometimes called, are the most valuable of all hardy plants. They are of vigorous, upright growth, have large bold flowers, frequently measuring 5 to 6 inches in diameter, and are deliciously fragrant. These Roses will succeed in any locality and are so hardy that they will live through the severest winters with but a light protection. Some of the kinds do not bloom until the second year, but, when fully established, they all bloom freely at the usual time, early in the season. The Hybrid Perpetuals will stand hardship and neglect, but give much better results with good cultivation and rich soil. Always plant in open ground, as these Roses are not suitable for house culture. Our collection of Hybrid Perpetuals is by far the best in the country. The plants we send out are strong and hearty and on own roots.

### Mad. Alfred Carriere

Extra-large, full flowers, very double and sweet; rich creamy-white, faintly tinged with pale yellow.

**ANNA DE DIESBACH (Glory of Paris)**—Most lovely brilliant carmine; long, pointed buds, and large, finely formed, compact flowers; very full and double and delightfully sweet. A vigorous grower and fine bloomer.

**GIANT OF BATTLES**—A grand old favorite. One of the best, if not the best, hardy, vivid crimson Rose; large, very double and sweet.



Mad. Alfred Carriere.

### \* Paul Neyron

The flowers are immense; probably the largest and finest Rose; bright, shining pink; clear and beautiful; very double and full; finely scented; blooms the first season and all summer.

**LOUIS VAN HOUTTE**—Brilliant vinous crimson; large, full and fragrant; an excellent sort and one that we recommend most highly. One of the most beautiful Roses we have ever seen.

**FRANCOIS LEVET**—One of the best and most satisfactory of all Hybrid Roses; we recommend it highly for general planting. An unusually vigorous grower, and free-blooming. Large, finely made flowers almost the size of Paul Neyron; cherry-pink, delicately shaded carmine and blush.

**GENERAL JACQUEMINOT**—Bright, shining crimson, rich and velvety; exceedingly brilliant and handsome; makes magnificent buds and flowers and a most desirable Rose for open ground.

**GENERAL WASHINGTON**—Bright, shining crimson flowers, large and perfectly double; blooms the first season and almost constantly.

**EUGENE FURST**—Strong, vigorous grower, with thick, healthy foliage. Flowers beautiful, velvety crimson, shading to maroon. Highly scented with the same delightful perfume as some of the Tea Roses. In every way a most valuable Rose.



Paul Neyron.

**BARGAIN PRICES** One-year first size plants, 16c each; 3 for 45c, postpaid. Two-year-old plants, 43c each; 6 for \$2.25, by express.



**Regular Price** <sup>20c</sup> and <sup>50c</sup> - **Bargain Price** <sup>16c</sup> and <sup>43c</sup>

JUNE ROSES—Continued.

## Boule de Neige

A very hardy, pure white variety; medium size; very full, double flowers of delightful fragrance.

**COQUETTE DES BLANCHES**—Pure snowy white, sometimes faintly tinged with pale rose; blooms in large clusters; medium size, full and slightly fragrant.

**DINSMORE**—Popular for garden planting on account of its hardiness and vigor of growth; constant and profuse bloom, which begins soon after planting and continues all through the season. Flowers are large and perfectly double; color rich crimson-scarlet.

**PRINCE CAMILLE DE ROHAN**—Celebrated the world over for its large, handsome, fragrant flowers, and the freedom with which they are produced. The color is a deep, rich velvety crimson, passing to intense maroon shaded black; at a short distance they appear really black.

**CAPTAIN HAYWARD**—Bright scarlet, very vivid in summer and glowing in autumn. Large, full and bold, the outer petals finely reflexed, while the center petals stand up well, making a flower of striking beauty. Perfectly hardy.

**DUKE OF CONNAUGHT**—Velvety crimson, flushed with red. Flowers large, full and well formed. A vigorous grower.

**BLACK PRINCE**—Much sought after because of its dark crimson flowers which are shaded so deeply as to be almost black; cupped large, full, fine-shaped.



Boule de Neige.

## Ulrich Brunner

A great Rose, known to all planters as one of the best in this class. Immense, large, bold flowers, full and globular; rich, glowing crimson, elegantly flamed with scarlet. Hardy, unusually free bloomer. Highly fragrant.

**GLOIRE LYONNAISE**—Color, rich creamy white, passing when open, to a pale shade of salmon-yellow; deepest at the center. It is absolutely hardy everywhere, and we ask you to plant it freely. A constant source of delight. Blooms of immense size, full and double.

## Special Offer of June Roses

For 50c we will send you postpaid by mail 4 of these Hardy June Roses, in strong, first size plants, known as the old favorites, as follows:

Anne de Diesbach  
Boule de Neige

Francis Levet  
Mrs. Alfred Carriere

The 4 in two-year-old plants by express, all on own roots, for \$1.50. Order as "Grandmothers' Favorite" Collection.

**BARGAIN PRICES** One-year first size plants, 16c each; 3 for 45c, postpaid. Two-year-old plants, 43c each; 6 for \$2.25, by express.



Ulrich Brunner.

**Regular Price** <sup>15c</sup> and <sup>40c</sup> - **Bargain Price** <sup>12½c</sup> and <sup>33c</sup>

# Popular Hardy Climbing Roses

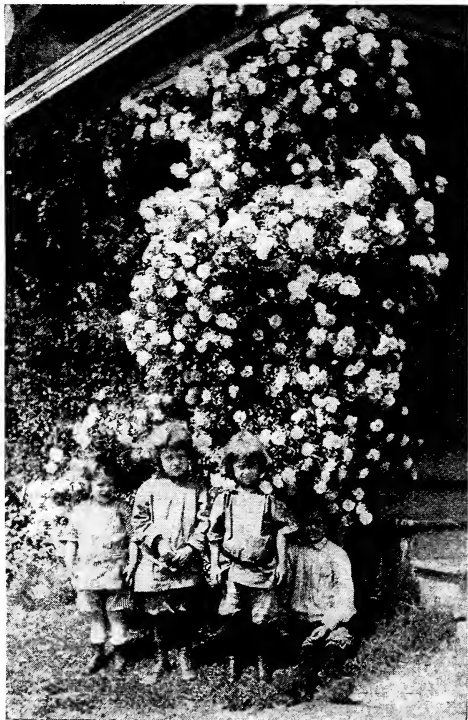
Hardy Climbing Roses have the popular call. They have become an absolute necessity for beautifying the home, for training over porches, verandas, trellises and pergolas, and they make the most beautiful flowering hedges when trained on low supports. Also when grown as individual specimen plants, as they soon form a beautiful bush more ornamental than many hardy shrubs. They can be kept trimmed into any shape or height desired, and thus make a large, handsome bush Rose. No other concern offers such a complete list of Climbing Roses as we, including, as it does, all the new kinds, as well as the old tried and true favorites which may be found spreading their beauty all over our fair land.

All the Climbing Roses in our unequalled list are on their own roots—a most vital point in a Climbing Rose. Some are absolutely hardy in the coldest parts of the country, while others growing luxuriantly in the Middle and Southern section, require some slight protection in the North.

## \* A Thousand Beauties

(German Tausendschoen)

The most sensational Climbing Rose yet introduced, not even barring Crimson Rambler. A single cluster is a bouquet in itself, hence the very fitting name, "Thousand Beauties." Blooming profusely from the beginning of June until the last of July, the flowers appear in clusters (10 to 15 in cluster) of splendid size and quite double. The colors run from delicate balsam to tender rose through the intermediate shades of bright rose and carmine, with white, yellow and various other indescribable tints showing. There is no other Rose in cultivation like it. It is a strong grower, with but few thorns, magnificent foliage, impervious against mildew and absolutely hardy in the open ground everywhere. The most remarkable Rose of its kind in the world, and has been awarded numerous medals.



Thousand Beauty.

## \* Dorothy Perkins

The Brilliant Pink Rambler-Rose. Flowers are borne in large clusters; are very double, with prettily crinkled petals; remarkably pretty pointed buds, beautiful clear shell-pink in color, lasting a long time without fading. The bush is perfectly hardy in all localities, a rapid and thrifty grower, bearing its wondrous flowers in great clusters.

\*EXCELSA—A new and distinctive Rambler of remarkable merit. A remarkable grower, free from insects and producing a great quantity of blooms of crimson maroon with the tips of the petals scarlet. Flowers full and double and thirty or forty produced on a stem. The undesirable features of the Crimson Rambler, the unsightly foliage, is eliminated by the infusion of Wichuraiana blood. Hardy everywhere, and soon produces a magnificent bush. Will grow in any situation. An excellent variety for hedges and pergolas.

\*DR. W. VAN FLEET—Flowers when open run four inches and over in diameter. The center is built high, petals beautifully undulated and cupped. The color is a remarkable delicate shade of flesh-pink on the outer surface, deepening to rosy-flesh in the center. The flowers are full and double, of delicate perfume; buds pointed. It very much resembles Souv. de Pres. Carnot in color. Strong, rapid grower. Immune from insects and disease. Foliage deep green the entire growing season.

\*WHITE DOROTHY—It is a rampant grower and in a short time will cover a large trellis with its long, sturdy canes clothed with brilliant green, shining foliage of splendid texture and free from mildew or attacks of insects. The flowers are of a brilliant glistening white and are borne in great trusses, completely covering the plant, until it resembles a snowdrift.

BIRDIE BLYE—Buds long and pointed. Color bright carmine, changing to bright satiny rose as they open. Blooms produced at the end of every shoot in clusters.

\*CHRISTINE WRIGHT—Large, thick, leathery foliage. Flowers 4 inches in diameter. Color bright, clear pink, almost double; borne in large clusters.

\*GAINSBOROUGH—Delicately tinted flesh, almost white and lustrous as satin. An admirer compared the flower to a beautiful girl wearing a Gainsborough hat ornamented with white ostrich plumes; hence the name.

\*VEILCHENBLAU, or VIOLET BLUE (Blue Rose) — The Blue Rose is one of the most rampant growers we have ever seen, covering a large porch in a single season. The flowers are borne in loose clusters and are of a delightful shade of blue—something entirely different from any Rose in cultivation.

**BARGAIN PRICES** One-year first size plants, 12½c each; 3 for 35c, postpaid. Two-year-old plants, 33c each; 6 for \$1.75, by express. Varieties marked \* furnished in large specimen plants, 75c each, by express.

**Regular Price** <sup>15c</sup> and <sup>40c</sup> - **Bargain Price** <sup>12 1-2c</sup> and <sup>33c</sup>

## Climbing American Beauty

American Beauty is perhaps the best known, most popular and impressive Rose in cultivation. Big, gloriously rich in fragrance, the flowers are simply superb. Every Rose expert has longed to produce this Queen of Beauty in climbing form through the delicate science of hybridizing and cross breeding. This is no ordinary Climbing Rose, but is a vigorous, rampant, climbing type of the real American Beauty, with its gorgeous flowers and surpassing fragrance. Immense blooms measuring 3 to 4 inches in diameter; and each one is invariably produced on a separate stem. The color is glowing crimson red, the real American Beauty color. The foliage is magnificent and is an important feature in climbing Roses. for without healthy, leathery foliage any climbing Rose is a failure, because it is unsightly. Climbing American Beauty has tough, beautiful, glossy green foliage, which in itself is ornamental and retains its brightness during the entire season. Absolutely hardy in all localities and withstands the rigid winters of a temperature 10 to 25 degrees below zero without protection. Equally satisfactory in the warmest southern climates. For single specimens, for pergolas, for climbing over verandas, or any place that an ordinary vine will grow, Climbing American Beauty will thrive. It does not require any petting or coaxing.

Remember, every plant is pot grown, and unlike stock sold by nursery agents, is on its own roots. Once planted, it practically lasts forever.

**BARGAIN PRICES** Of Climbing American Beauty, one-year, first size plants, 16c each; 3 for 45c, postpaid. Two-year-old plants, 43c each; 6 for \$2.25, by express. Large specimen plants, 75c each, by express.

## Rambler Roses

**\*PHILADELPHIA CRIMSON RAMBLER**—This now famous variety differs from the old Crimson Rambler in having brighter, deeper and more intense crimson color. Earlier than the Crimson Rambler and entirely free from mildew. Flowers perfectly double and of excellent substance.

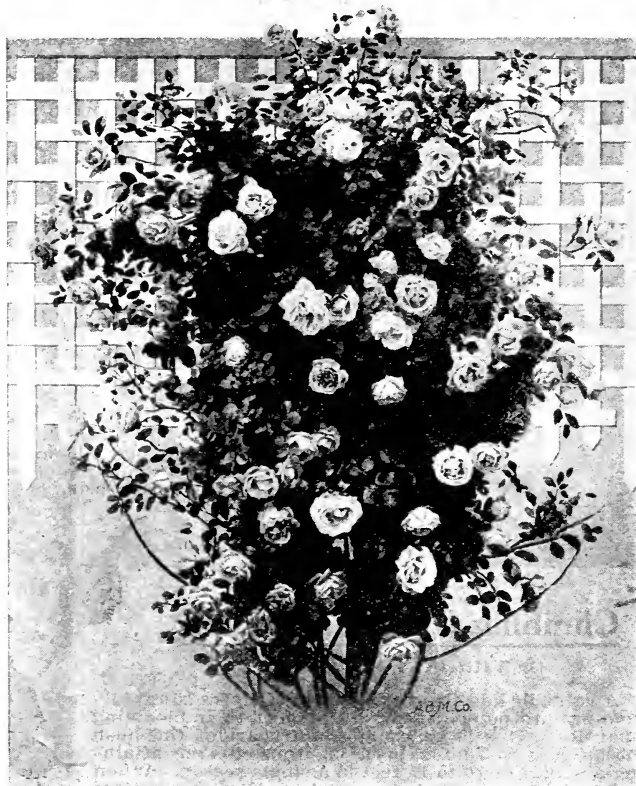
**CRIMSON RAMBLER (The Rose of the Masses)**—One-year-plants will attain a height of 10 to 20 feet in a single season, and the second year they will continue to produce a marvelous profusion of rich and glowing crimson flowers in large clusters. It presents a vivid crimson mass of beauty when in full bloom, during June and July. It is absolutely hardy everywhere.

**RUBIN (A New Rambler)**—Flowers are large and more double than Crimson Rambler; color bright, shining crimson-scarlet. Hardy in all localities. A strong, rampant climber, and has received a certificate of merit by the German National Rose Society.

**YELLOW RAMBLER (Aglia)**—Flowers are deep golden yellow and very fragrant.

**WHITE RAMBLER (Thalia)**—Flowers pure white, sometimes tinted with blush.

**PINK RAMBLER**—Large trusses of brilliant carmine flowers. Very popular.



Climbing American Beauty.

**\*THE FLOWER OF FAIRFIELD**—A rampant climber, it bears continuously enormous clusters of brilliant crimson flowers from early spring until frost. The youngest plants bloom profusely the first year. Absolutely hardy everywhere and retain the bright fresh green of its foliage all summer. Don't fail to include this marvelous, hardy, everblooming climbing Rose.

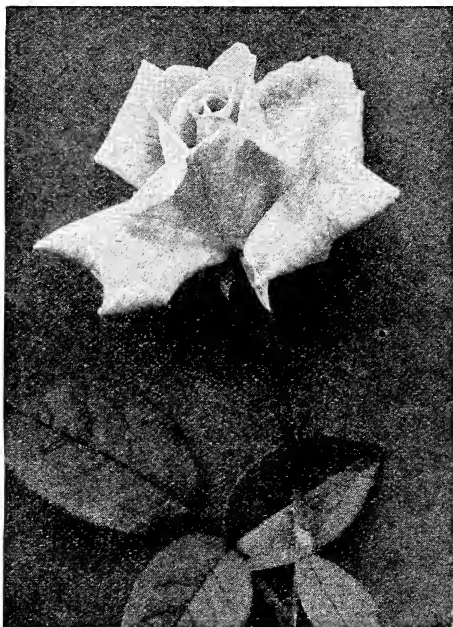
**EMPRESS OF CHINA**—The Apple-Blossom Rose. Soft dark red, changing to light pink, like an apple blossom.

**\*AMERICAN PILLAR**—A new Climber of extremely vigorous habit of growth, the bushes being clothed in lively green from earliest spring until late in the fall. The flowers are produced in profusion, fairly covering the bush, and their pretty pink color is a delight to the eye. In the fall, the flowers are followed by large clusters of attractive red berries, which are highly ornamental. Planted singly or in groups on the lawn, this Rose is sure to evoke favorable comment.

**BARGAIN PRICES** Of Rambler Roses, first size one-year plants, 12½c each; 3 for 35c, postpaid. Two-year-old plants, 33c each; 6 for \$1.75, by express. Varieties marked \* furnished in large specimen plants, 75c each.

**Regular Price** <sup>20c</sup> *and* <sup>50c</sup> - **Bargain Price** <sup>16c</sup> *and* <sup>43c</sup>

## Hardy Climbing Hybrid Tea Roses



Climbing Killarney.

The Roses on this and the next page are noted for the exquisite beauty of their flowers, rivaling, as they do, those of the Hybrid Tea class. They are all wonderfully strong growing, hardy and vigorous, and in constant bloom all summer. In the middle sections of the country and in the Northwest they thrive and bloom most luxuriantly, while in the warmer sections they fairly run riot in their glory of growth and bloom. Even in the coldest Northern States they grow to perfection, but will require protection in winter.

### \* Climbing Pink Killarney

The beautiful flowers of this wonderful Rose are identical with the parent variety, but the bush is of the climbing habit of growth, placing it at once in a class by itself, because there is no other climbing variety of its color. It is a strong, rapid grower, growing to perfection in the open ground, throwing up shoots 10 to 15 feet high in a single season, and is entirely hardy. It blooms continuously throughout the season, and the flowers are magnificent beyond description, immense, long, pointed buds with massive petals, opening into flowers of enormous size; color deep pink, bright and sparkling, an exquisite shade, deliciously fragrant; in fact, one of the greatest new Roses ever offered.

\***CLIMBING WHITE KILLARNEY**—An exact counterpart of the bush Rose White Killarney, but a vigorous climber. Produces blooms of purest white of same formation, and on single stems same as the bush Rose. Hardy everywhere, and blooms all season.

### \* Climbing Gruss an Teplitz

Or VIRGINIA R. COXE.

A valuable addition to this class of Roses so rapidly coming into popularity on account of their blooming qualities. This is an exact counterpart of the bush Rose Gruss an Teplitz, but a vigorous climber, attaining a height of 10 to 15 feet in a single season. When it first blooms in the spring it is a dazzling sheet of velvety crimson. Each bloom is produced singly on long stems, the same as the bush variety so well known. It produces blooms throughout the growing season.

**CLIMBING WHITE MAMAN COCHET**—For many years the old White Maman Cochet has been considered one of the very best of all White Tea Roses, and this new climber has all the superfine qualities of that all standard rose, with added value in its climbing habit. The foliage is strong and of a delightfully fresh green, is not subject to disease or insect attacks, and even when not in bloom the plant is of great charm, adding great beauty to the house. The exquisite white flowers, every one of which is a perfect specimen of the White Maman Cochet Rose, are borne in great profusion, fairly covering the plant all summer, for it is one of the most constant bloomers of all the white climbing Roses. It is absolutely hardy, except in the extreme North, where it requires some slight protection.

\***CLIMBING CLOTILDE SOUPERT**—An offspring of that famous Rose, Clotilde Soupert, this beautiful, hardy, everblooming climber is excellent in every way. Produces cluster after cluster of the most finely formed flowers, large, round, perfectly double, with beautifully imbricated petals, the odor of which is delightful. The ivory-white color, shading toward the center to silvery rose, gives an effect that is indescribably beautiful.

**BARGAIN PRICES** One-year first size plants, 16c each; 3 for 45c, postpaid. Two-year-old plants, 43c each; 6 for \$2.25, by express. Varieties marked \* furnished in large specimen plants, 75c each, by express.

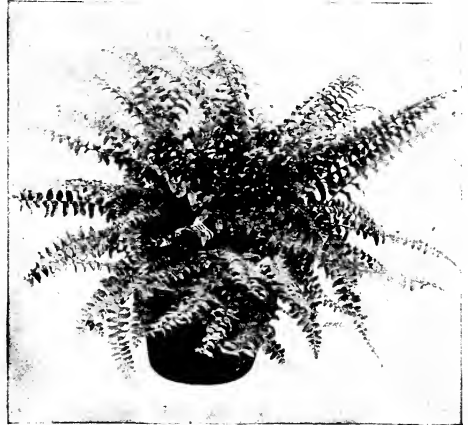


Climbing Gruss an Teplitz.

**Regular Price** <sup>20c</sup> and <sup>50c</sup> - **Bargain Price** <sup>15c</sup> and <sup>40c</sup>

# Popular Decorative Ferns

There is no plant that seems to fill such an important place as these Decorative Ferns. Their adaptability to almost all conditions makes them the best decorative plant grown. Easy of culture, equally adapted for indoor or out, that no one should be without them. Use a soil composed of five parts; two parts of good garden soil, two parts finely screened peat or leaf mold from the woods, and one part sharp clean sand. This should then be thoroughly sterilized by putting in an oven and baking in order to destroy earth worms, etc. Place some broken pieces of pots or crocks and some charcoal in the bottom of each pot for drainage. A temperature of not less than 55 degrees F. should be maintained at all times, with a rise in the day time of 10 degrees to 15 degrees. Judgment should be exercised in watering. On warm days they should be syringed at least twice. Never allow them to become too dry. Insects which are most troublesome are thrips, red spider, scale and mealy bug. Thrips, red spider and mealy bug are easily prevented by a properly moistened atmosphere, also by spraying of foliage once a week with tobacco water, made the consistency of weak tea, and increased or decreased in strength as occasion demands.



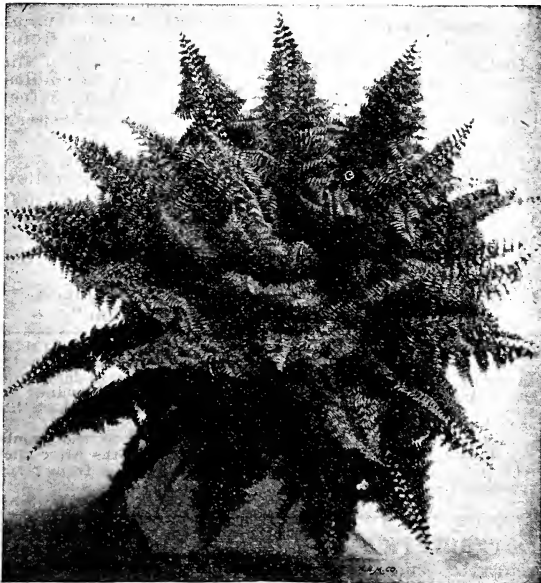
Teddy Junior.

**SCOTTII** (Dwarf Boston or Newport Fern)—Much more bushy growth than the Boston. The fronds droop gracefully, but are not as long and heavy as the Boston. Very rapid grower. A great demand for house Fern.

**TEDDY, JR.**—New dwarf Fern. Fronds are broad and beautifully tapered from base to tip, drooping just enough to make a graceful plant. Produces nearly four times as many fronds as any other Fern introduced. Compact, vigorous grower and thrives under most any condition.

**MAIDENHAIR FERN** (*Adiantum cuneatum*)—Has triangular foliage on thin, wire-like stems.

**JACKSONII**—Extremely strong grower. Resembling the Sword Fern, forming a large, upright plant in a short time.



Whitmanii Fern.

**WHITMANII COMPACTA**—This is a condensed form of the "Ostrich Plume Fern," with valuable characteristics added which are not evident in the parent, the pinnae sub-dividing, making miniature fronds, looking as if two or more were condensed in one. Graceful beyond description.

**THE BOSTON FERN**—This Fern differs from the ordinary Sword Fern in having much longer fronds which frequently attain a length of 6 feet, drooping gracefully over the side of the pot or jardiniere, and on this account it is frequently called the Fountain Fern. This drooping habit adapts this variety for growing as a single specimen for a table or pedestal. Equally good for outdoors during the summer months as well as a decorative plant for indoors during the winter.

**WHITMANII** (Ostrich Plume Fern)—More of a dwarf habit than the Boston Fern. The fronds are of entirely different nature. Each frond is subdivided on the order of the Compacta fern, thus producing a very beautiful effect. Its decorative ability is excellent.

**AMERPOHLII** (Philadelphia Lace Fern)—The fronds lace-like, dense and delicate. Small leaflets are subdivided into perfect miniature fronds. The side ones stand at right angles together and on edge instead of flat, giving both sides the same beautiful appearance. It is impossible not to see the beauty and grace of this wonderful Fern.

**ROOSEVELT**—Resembles the Boston Fern, but produces many more fronds, thus making a handsomer and bushier plant; in fact it today is more popular with the florists than the Boston; it will make a larger plant in a shorter time. The fronds are beautifully undulated, giving it a very pretty rising effect that is seen in no other Fern.

**Bargain Price** Strong first size pot plants, 15c each; 4 for 50c. Large 4-inch pot plants, 40c, postpaid.

## Japanese Fern Ball

Composed of dormant Japanese Fern roots and moss, so put together that they send out beautiful leaves from every point. Place the ball in water for 15 minutes, then suspend it in any desired position and sprinkle occasionally as required. **Large balls**, 5 inches and over in diameter, 40c each; 2 for 75c, postpaid; **larger balls**, 7 to 9 inches in diameter, 60c each, 2 for \$1.00, postpaid.

# Bargains in Pot Grown

## Dahlia Plants

### Cactus Collection 8 FOR 50 CENTS, POSTPAID

For 50c we will send postpaid 8 strong pot plants (which are the best for planting) of the following varieties, each one labeled. At such a price no one should be without the beautiful fall blooming flowers. The colors and formation of each bloom is beyond description. Order as the "Cactus Collection."

**COUNTRY GIRL**—Large, deep golden yellow, tipped bright amber. Beautifully incurved petals.

**J. H. JACKSON**—Very large, rich velvety maroon.

**KRIEMHILDE**—Deep rosy pink with lighter center. A distinct and valuable variety, as the flowers keep a long time after cutting.

**GOLDEN CENTURY**—The sensational golden yellow cut flower variety; owing to its rich shades, immense size, long, slender, wiry stems and good keeping qualities. Color golden yellow, shaded amber; showing up gorgeously under artificial light. Height, 4 feet.

**GLADYS CENTURY**—The most distinct and beautiful of this wonderful class. Center of petals rosy crimson, with rose pink band on either side and white zone around the yellow center. Height three feet.

**A. D. LIVONI**—Clear, bright pink; quilled petals; best pink Show Dahlia.

**GRAND DUKE ALEXIS**—White, edged lavender; quilled petals.

**NYMPHAEA**—One of the most delicately beautiful. suffused shrimp pink.



Cactus Dahlia.

White

### Century Collection 8 FOR 50 CENTS, POSTPAID

For 50c we will send you postpaid, by mail, the following magnificent Dahlias. Strong pot plants, the right kind for planting in order to secure the best blooms. This collection comprises plants of the leading varieties of the different types and enables you to secure a fine assortment of style and color, of these most popular flowers, at a very low price.

**TWENTIETH CENTURY**—Early in season, intense rosy crimson, shading to white at tips, with a bright pink blotch in center petals.

**GOLDEN CENTURY**—Sensational golden yellow, shaded amber. Immense size. Long wiry stems. Excellent for cut flowers, of good keeping qualities.

**WHITE KRIMHILDE (Cactus)**—A new, pure white, and one of the best white commercial varieties, owing to its wonderful keeping qualities.

**FRUTE (Cactus)**—Soft salmon pink, shaded and tipped clear bright pink. One of the finest pink Dahlias.

**GRAND DUKE ALEXIS (Decorative)**—Immense flowers of pure white with quilled petals. A profuse bloomer.

**JACK ROSE (Decorative)**—The best of crimson Dahlias, that brilliant color that makes the Jack Rose so popular.

**ETHEL SCHMIDT (Fancy)**—White suffused pink, spotted and penciled crimson. A beautiful flower of perfect form and produced on long, slender stems in great profusion.

**ARABELLA (Show)**—One of the loveliest Dahlias of soft primrose, shaded and tipped rose. Order as the "Century Collection."

### Decorative Collection 8 FOR 50 CENTS, POSTPAID

**CLIFFORD W. BRUTON**—Very large, clear canary yellow.

**JACK ROSE**—The best crimson for garden or cutting; that brilliant crimson red that makes the "Jack" Rose so popular, and suggested the name.

**MINNIE McCULLOUGH**—Very striking. Soft golden yellow tipped bronzy red; very effective under artificial light; perfect form, on long, erect stems.

**GIGANTEA ALBA CENTURY**—Snow-white, of immense size, beautiful form; produced in endless profusion on long, graceful stems. Height, 5 feet.

**THE PILOT**—Yellow, heavily tipped bright terra cotta.

**PRINCESS VICTORIA**—The finest pure yellow Show Dahlia in existence. Clear, pure canary yellow, without shade or blemish from bud to old age. Perfect form, on long, slender stems. An extremely early and profuse bloomer.

**STORM KING**—The earliest white Show Dahlia; perfect form and extremely profuse bloomer.

**WHITE SWAN**—Large, pure white. Reliable.

Order as the "Decorative Collection."

Washington, D. C., June 1, 1917.  
Gentlemen:—I have been so busy since the arrival of the flowers I purchased from you, to acknowledge their receipt, but I wish now to thank you for the fine looking plants you sent me and your prompt shipment of the Roses which had been left out of the first box.

The plants are all looking fine and several of the peonies have bloomed this spring, just about two months after their receipt by me, which I consider a record, judging from plants received from other florists. Very truly yours,

MISS GRACE D. THOMAS.

**Bargain Price** Of Dahlia plants, 10c each; \$1.00 per dozen, postpaid. These plants ready to send out about April 1st.

# Bargains in Magnificent Everblooming Cannas



Bed of Famous West Grove Cannas.

We have a particularly fine collection of these imposing foliage plants. It includes all novelties and standard varieties which we have found to be worthy of distribution among our customers. Cannas are not hardy and should not be planted until danger of frost is past. Take the roots up in the fall and store them in a warm, dry place.

No flowers will make such an attractive bed. Rapid in growth, freedom of bloom and ornamental foliage makes them so desirable for planting in beds, on lawn or yard, and especially after early-blooming bulbs are done, such as Tulips, Hyacinths, etc. These days of bargains no one should be without flowers such as these. We have specified the kinds suitable for three circular beds of different sizes, but can furnish other varieties if so desired. These are started plants from 3 and 4 inch pots. Price includes delivery. Safe arrival guaranteed. Order by number only.

## Canna Bed

No. 16

FOR BED 4 FEET ACROSS

- 1 Red for center
- 6 Pink for circle or all one color, postpaid.

**70c**

## Canna Bed

No. 17

FOR BED 7 FEET ACROSS

- 1 Red for center
- 6 Yellow for first circle
- 12 Red or pink for second circle or one color, postpaid.

**\$1.85**

## Canna Bed

No. 18

FOR BED 10 FEET ACROSS

- 1 Red for center
- 6 Variegated yellow for first circle
- 12 Pink for second circle
- 18 Scarlet for third circle or any other colors desired. Delivered

**\$3.50**

## Best New Cannas of Recent Introduction

- MRS. WOODROW WILSON**—Light green foliage veined. Color a rich but soft crimson pink with very large flowers with broad, overlapping petals.
- PANAMA**—The unusual color markings of this new Canna is its attractive feature. The orange-red petals are bordered with a broad edge of golden-yellow.
- FIREBIRD**—The color is extremely desirable, being absolutely pure scarlet with no suffusion, streaks or blotches. 3 to 4 feet.
- KATE F. DEEMER**—A rich yellow when first opened, but bleaching to almost pure white at the ends and developing a conspicuous scarlet throat. 5 feet.
- OLYMPIC**—Gigantic heads. Rich oriental red with a lighter shade towards the center. 5 feet.
- METEOR**—A brilliant new crimson Canna of unusual merit. Green foliage, massive blooms.
- MRS. ALFRED F. CONARD**—4 feet. Color a beautiful shade of salmon-pink. Flowers of immense size. Producing blooms so freely as to make a continuous show for several months.
- ROSEA GIGANTEA**—3 to 4 feet. A magnificent showy Canna of a rose to carmine-pink shade. Flower heads immense.
- JUPITER**—Beautiful, rich red flowers. 6 feet.
- WILLIAM SAUNDERS**—Bright scarlet in immediate clusters; bronze foliage. 4 feet.
- KING HUMBERT**—Orange scarlet, striped crimson. Foliage bronze. 4½ feet.

## Standard Varieties

- BRANDYWINE**—Bronze-leaved; crimson. 4½ feet.
- DAVID HARUM**—Bronze foliage. Red. 3½ feet.
- EGANDALE**—Dark foliage, scarlet. 3½ feet.
- WYOMING**—Purple foliage, orange flowers.
- BEAUTE DE POITEVINE**—Rich crimson. 4 feet.
- CHARLES HENDERSON**—Solid crimson. 3½ feet.
- COME DE BOUCHARD**—Yellow. 4½ feet.
- DUKE OF MARLBOROUGH**—Crimson. 3½ feet.
- FLORENCE VAUGHAN**—Yellow, dotted red. 4 feet.
- FLORIDA**—Scarlet with golden band. 2½ feet.
- WEST GROVE**—Beautiful pink. 4½ feet.
- J. D. EISELE**—Vermillion-scarlet. 3½ feet.
- LOUISE**—Rose-pink, streaked red. 5 feet.
- MAIDEN'S BLUSH**—The best pink. 3 feet.
- Mlle. BERAT**—Large, pink flowers. 4 feet.
- PHILADELPHIA**—Crimson-scarlet. 3 feet.
- PILLAR OF FIRE**—Crimson-scarlet. 7 feet.
- QUEEN CHARLOTTE**—Orange-scarlet. 3 feet.
- VENUS**—Gay, rosy pink with mottled border. 4 feet.
- NIAGARA**—Deep crimson and yellow. 3 feet.

## BARGAIN PRICES

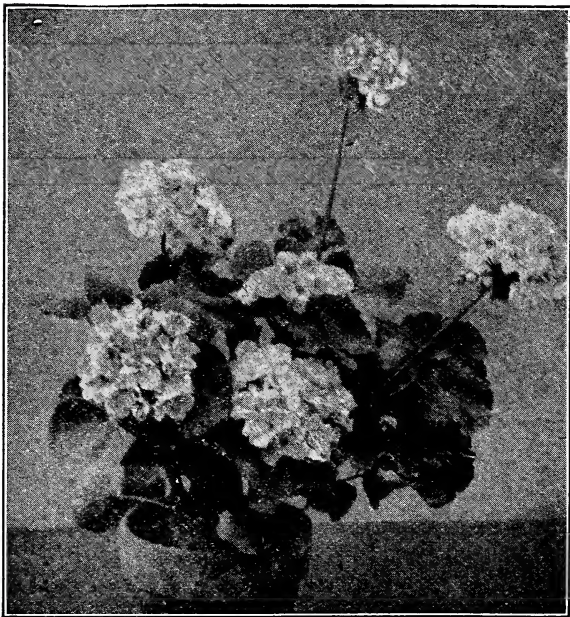
Of New Cannas: Strong pot plants, 16c each; 3 for 45c, postpaid.

## BARGAIN PRICES

of Standard Varieties, 12c, postpaid; 3 for 35c.

# Regular 15c Value Bargain Price 10c each

## The Choicest Summer-Blooming Geraniums



West Grove Geraniums.

### New Pelargoniums

**Swabian Maid.** This remarkable Pelargonium is a sport from the popular variety Easter Greeting. Immense reddish carmine flowers with five very regular, nearly black blotches bordered with purplish carmine, producing a very effective coloring. Its robust growth and freedom of bloom make it an ideal decorative winter blooming plant. Always in bloom, and with its dark green foliage forms a striking contrast.

**Wurtembergia.** Blooms medium size, of a bright carmine with large, velvety, sharply defined blotches. Free blooming, makes an attractive decorating plant. Equally as good for bedding as a pot plant for winter blooming.

**Easter Greeting.** This remarkable variety is famous as an Easter decorative plant, owing to its free blooming qualities, dark green foliage, robust growth and enormous bright colored flowers. Color a fiery amaranth red with five regular shaped spots. Equal to an Azalea as a pot plant.

### Pelargoniums

**Lady Washington.** Lilac-pink.

**Pansy Pelargonium.** Pink and crimson.

**Special Offer** One each of the 5 Pelargoniums sent postpaid for 90c.

**Bargain Price** of Pelargoniums in Strong Pot Plants, 20c each, postpaid.

### Choice Double

Strong plants from 3-inch pots.

**Alphonse Ricard.** Semi-double; orange-red.  
**Mrs. Lawrence.** An excellent bloomer. Soft salmon pink, tinged white.

**Cousin Jane.** Clear rich pink, slightly spotted light red.

**Jules Vasseur.** Bright scarlet, white center.

**Jean Viaud.** Soft pink, white blotches.

**Berthe de Priscilla.** Dwarf habit. Fine bedder. Bright silver rose-pink.

**John Boyle.** Rich scarlet. Very effective.

**Heteranthe.** Bright scarlet.

**Countess de Harcourt.** Pure snow-white.

**Mme. Buchner.** Snow-white; vigorous.

**Mme. Recamier.** Pure white. Strong grower. One of the best whites.

**Ornella.** Magnificent. Semi-dwarf habit. Rich scarlet, shaded crimson.

**S. A. Nutt.** Rich, dark crimson. Superb.

**Jean Oberle.** Peach pink, shaded white edge.

**Fleuve Blanc.** Pure white. Dark green foliage. Compact grower.

**La Cid.** Charming shade of cardinal red.

**Anais Segalas.** Bright salmon. Zoned foliage.

**Double Dryden.** Coral white center, shading through a delicate lilac. Ideal pot plant.

**Beaute Poitevine.** Bright salmon-pink.

**Dr. Despres.** Changeable violet, marked vermilion.

**Le Pilote.** Glowing crimson-scarlet.

**Double New Life.** Outer flowers brilliant red, center pure white flowers.

### Choice Single

**La Favorite.** Snowy-white; superb.

**Mrs. E. G. Hill.** Free bloomer. Light salmon.

**Eugene Sue.** Brilliant shade of russet-orange.

**Granville.** Deep rose-pink with white blotches on upper petals.

**L'Aube.** One of the best pure whites.

**Jacquerie.** Deep carmine-red.

**Fener.** Brilliant crimson-red. Dwarf growth.

**Antithese.** Vermilion-scarlet.

**Baron Grubissich.** Bright, tender rose, white center.

**Edmond Blanc.** Large trusses of bright crimson. Coppery center.

**Clifton.** Solid color of bright red.

### Ivy-Leaved Geraniums

**Dina Scalarandis.** Double white, tinged lilac.

**Rycroft's Surprise.** Beautiful shade of rich pink.

**Mrs. Banks.** Blush-white, upper petals feathered deep pink; semi-double.

**Alliance.** Delicate lilac-white, upper petals feathered and blotched crimson-rose.

**Pierre Crozy.** Bright scarlet; dwarf compact habit.

### Fancy and Sweet-Scented Geraniums

**Happy Thought.** Green and white.

**Madame Salleroi.** Green, dotted white.

**Prince Bismarck.** Dark bronze.

**Apple-Scented.** A grand old favorite.

**Rose-Scented.** Delightful rose scent.

**Lemon-Scented.** Deliciously scented.

**Bargain Price** of Geraniums in Strong Pot Plants, 10c each, postpaid.



# Bargains in Violets and Chrysanthemums

## Hardy Sweet Violets

Rich in modest beauty and famed for its enchanting fragrance, the Violet continues to increase in popularity. With the last snows of winter still about it, this gentle flower shyly appears from out its icy bed, heralding the coming of spring. All our plants are absolutely clean and healthy and will produce highly satisfactory results.

Prices, strong plants, 10c each; 3 for 25c; any 7 for 50c; any 15 for \$1.00; \$6.00 per 100.

**Marie Lynch**—In color it is a charming shade of lavender-pink and the foliage is a rich, dark green.

**Admiral Avellan**—Rich, dark purplish red.

**California**—The largest Violet in cultivation. Rich, violet-blue; flowers on long stems.

**Dorsett**—Darkest, deep violet-blue; long stems, large flowers.

**Farquhar**—Double flowers of delicate fragrance, deep blue.

**Governor Herrick**—Rich, dark purple; single.

**Lady Hume Campbell**—The best double blue. Strong, healthy and perfectly hardy.

**Luxonne**—Soft violet purple; fragrance delicious.

**Prince of Wales**—One of the best. The large, blue single flowers are deliciously fragrant.

**Swanley White**—Pure white, perfectly double, fragrant flowers.

**Peacock, New Violet**—This is an entrancingly beautiful new Violet; the markings of its charming colors are difficult to describe. The prevailing color is white, with delicate tracings and markings of sky-blue.

## Handsome Japanese Chrysanthemums

### New and Rare Varieties

Price, except where noted, strong plants, 10c each; 6 for 50c; 12 for \$1.00.

**Chrysolora**—One of the best yellow. Fine, incurved form, with perfect stem and foliage.

**Black Hawk**—Late. Dark velvety crimson-scarlet.

**Early Snow**—A pure early white, improved Polly Rose.

**Golden Glow**—Bright yellow. Fine large flowers; early.

**Golden Wedding**—Loosely incurved, bright yellow.

**Pacific Supreme**—Pink.

**Robert Halliday**—Yellow; tremendous size.

**Timothy Eaton**—Most magnificent white.



Single and Double Violets.



Chrysanthemum, Early Snow.

**Yellow Eaton**—Bright yellow. Incurved petals, immense size, often measuring 6 to 8 inches.

**Wm. Turner**—A decided incurve of the purest white. Semi-dwarf. Fine form and strong grower.

**Chieftain**—Beautiful incurved; full and round. Lovely pink.

**Jeannie Nonin**—Pure white.

**Cullingfordi**—Red. Darker shadings.

**Col. Appleton**—One of the finest yellows.

**Chas. Razer**—Early. A pure white variety of special merit.

**Mrs. E. A. Seidewitz**—Late pink; round; incurving.

## Eight Varieties 50c

POSTPAID.

**Chrysolora**—One of the best yellow varieties for early October. Fine incurved form with perfect stem and foliage up to the bloom.

**Pacific Supreme**—A beautiful shade of deep pink; flowers of immense size and excellent form. Blooms early. Flowers develop without fading. One of the best pinks.

**Maud Dean**—Incurved, bright pink, with fine stem and foliage. Petals tipped white.

**Chas. Razer**—Early. A pure white variety of special merit.

**Harvard**—Very dark crimson reflexed Japanese.

**Early Snow**—A pure white, improved Polly Rose. Magnificent form.

**Golden Wedding**—Loosely incurved petals of bright yellow. Beautiful shape and color.

**Black Hawk**—Darkest crimson scarlet. The only deep scarlet. Fine form and very large.

**Special Offer** One each of the eight beautiful "Mums" described above, postpaid, for 50 cents. Please order as "Popular" Set.

# Bargains in Summer Flowering Bulbs

## Gorgeous Flowering Gladioli

Among the most popular summer-flowering bulbs, and of high decorative value, either in the garden or as a cut flower. All bulbs sent out by us are first-class, sure to bloom. They should be planted in a sunny position about May 1st.

### New and Rare Varieties

**Mrs. Frank Pendleton**—In color a lovely salmony-pink with brilliant deep, red blotches in the throat. 20c each, 6 for \$1.  
**Kunderdi "Glory"**—The New Ruffled Gladiolus—Petals exquisitely ruffled and fluted. Delicate cream-pink, crimson stripe in center of lower petals. 15c each, 7 for \$1.00.  
**Niagara**—Cream and yellow; throat splashed carmine. 20c each, 6 for \$1.00.  
**Pink Perfection**—A soft apple blossom pink with chamouis suffusion that is very attractive. 15c each, \$1.50 per dozen.  
**War**—Flowers deep brilliant crimson, large size and great substance. 20c each; 6 for \$1.00, postpaid.

**Peace**—The large flowers are almost pure white; there is a trace of lilac on the lower petals. Fine for bedding and cutting. 15c each, \$1.50 per dozen.  
**Jane Dieulafoy**; The Superb. A large, fine, creamy-white flower, with large salmon-maroon stains. 20c each, \$2.00 per dozen.  
**Schwaben**—The Primrose. Delicate primrose with yellow and crimson center. Magnificent large flower and spike. 25c each, 5 for \$1.00.  
**Panama**—A seedling of the famous America, with the same splendid form and substance, but is a deeper, richer pink. 15c each, 7 for \$1.00.

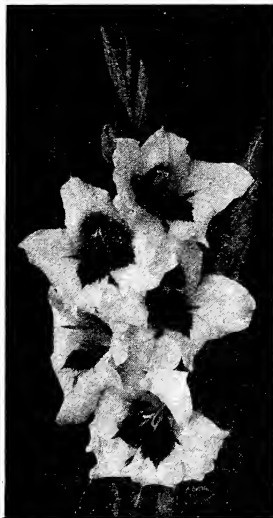
**BARGAIN PRICES** Of new and rare varieties. For \$1.50 we will send properly labeled, postpaid, one each of the 9 rare sorts.

### 15 Choicest Named Gladioli \$1.25

Selected from hundreds of the best varieties. In size of flowers, blooming quality and diversity of color, none will compare with these choice named Gladioli.

**America**—The most beautiful variety in cultivation. Soft flesh-pink, slightly tinged with lavender.  
**Halley**—The early Giant. Salmon-pink, immense size, very early.  
**Brenchleyensis**—Bright scarlet-vermilion.  
**Deep Rose**—Pink to orange-scarlet, but always cut-flower variety, as the blooms hold their

**Attraction**—Deep, dark crimson-pink, with a large pure white center free from mottling or spots, making a most conspicuous and attractive contrast.  
**Augusta**—Pure white; blue anthers.  
**Baron Hulot**—Rich, royal violet-blue. This when cut in combination with one of the yellow varieties, is truly exquisite.



Gladiolus.

**Independence**—Color varies from brilliant and rich. An excellent cut-flower variety for a long time.  
**Jessie**—Rich, velvety red.  
**Klondyke**—A clear yellow, with a vivid crimson-maroon blotch in throat; a splendid free grower.  
**Mad. Lemoine**—White, tinted lemon, large crimson center. Very early. Fine for pots to bloom at Easter.  
**May**—White, flaked rosy crimson.  
**Mrs. Frances King**—A striking shade of light scarlet or flame color; very effective both in the border and when cut.  
**Meadowvale**—One of the purest white grounds, with a touch of vivid crimson in the throat with a line of delicate pink.  
**Princes**—Brilliant scarlet-crimson, with three broad white blotches on the lower petals.  
**Victory**—Clear sulphur-yellow, the ends of the petals slightly suffused pink. Spike tall and erect.  
**Special Offer** The above collection of 15 choice varieties, blooming bulbs, all labeled, postpaid, for \$1.25; single varieties, 10c each; \$1.00 per dozen.

### Groff's Hybrid Gladioli

To our customers who want something decidedly better than the usual run of mixed varieties and who do not care to grow them under name, we offer below Groff's Hybrids or Silver Trophy Section sorts in separate colors or all colors mixed. These are extra fine kinds and are sure to please.  
**Groff's Silver Trophy No. 1**—In this collection you have the scarlets, reds and crimson.  
**Groff's Silver Trophy No. 2**—In this collection are the light colors, such as white and light pink, yellows.  
**Groff's Silver Trophy No. 3**—The best of the blues and purples in the section.  
**Groff's Silver Trophy, Mixed**—All colors of above varieties.  
**Price of Groff's Hybrids**, 6c each; 60c per dozen; \$4.50 per 100, postpaid.

### Large Flowering Mixed Gladioli

White and light shades mixed, 40c per dozen, postpaid.  
 Pink and Rose shades mixed, 40c per dozen, postpaid.  
 Scarlet and Crimson shades mixed, 40c per dozen, postpaid.  
 Yellow and Orange shades mixed, 60c per dozen, postpaid.  
 Striped and Variegated, mixed, 50c per dozen, postpaid.  
 All Colors Mixed, 35c per dozen; \$2.00 per 100, postpaid.

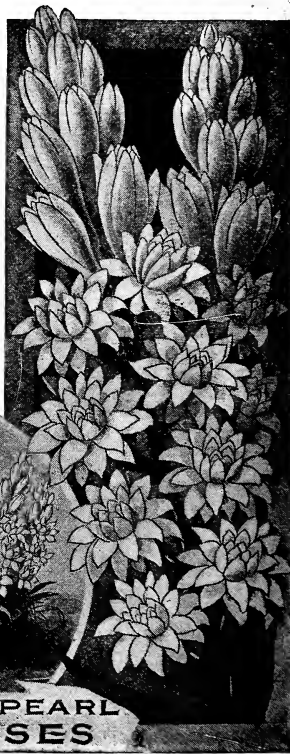
### Calla Lilies

Grand Winter-blooming pot plant. Easy to grow, free bloomers and superb flowers. Good at all seasons of the year. 20c each, 3 for 50c, except where noted.  
**Spotted**. Foliage exquisitely dotted with white; very ornamental, white flowers with black throat. Strong pot plants.  
**Lily of the Nile**. The old favorite White Calla. Grand white flowers—chaste and beautiful. Strong plants.  
**New Yellow**. Large, rich flowers, similar to the old white Calla in form; very fragrant. Color golden yellow.

### Fragrant Excelsior Tuberoles

Plant liberally of this beautiful summer flower. We offer only the finest bulbs.

**Dwarf Excelsior Pearl**—Flowers pure white, very double, of immense size and sweetly scented. 3 for 10c; 9 for 25c; 30c per dozen, postpaid.  
**Orange-Flowered**—Bears single snow-white flowers, resembling orange blooms and delightfully fragrant. 5c each; 6 for 25c; dozen, 50c, postpaid.  
**New Variegated-Leaved**—The leaves are bordered with white; white flowers. 5c each; 7 for 25c; 40c per dozen.  
**ALBINO**—Early bloomer, dwarf branching habit; flowers waxy white and single; very fragrant. 3 for 10c; 30c per dozen.  
**SPECIAL OFFER**—We send, postpaid, 9 Excelsior Pearl Tuberoles, 3 Orange-Flowered and 3 New Variegated-Leaved—15 in all—for 40c.



EXCELSIOR PEARL TUBEROSES

# Hardy Plants

## The Most Satisfactory of All

**HIBISCUS MEEHAN'S MARVEL MALLOW**—Without exception the finest production among the Hardy Plant line in years. They make a bush-like growth from 4 to 5 feet high and 2 to 3 feet across. The flowers are of an enormous size, frequently 8 to 10 inches in diameter and ranging in color from fiery crimson through various shades of red, pink and white. No garden or yard complete without them, perfectly hardy, will thrive in any locality or kind of soil and blooms continually from July until checked by frost. Require no care or protection. Price pot plants in separate colors, Pink, Red, or White: 25c each, 5 for \$1.00. Strong 2-year-old field-grown roots, 50c each, postpaid.

**Golden Bowl**—Yellow, with maroon center.

**TRITOMA (Red Hot Poker Plant; Torch Lily)**—One of the most striking groups of plants in cultivation. The lone, fiery, untamed red of the drooping flowers, one hundred on a spike, is a memorable sight. Require protection during the winter, but are of very easy culture.

**Pfitzerii (Everblooming Flame Flower)**—Best variety; flowers of rich orange-scarlet. 3 to 4 feet. 8-10.

**Uvaria Grandiflora**—Old fashioned variety with rich crimson flowers shading to yellow. 3 to 4 feet. 8-10.

Price, strong roots, 25c each, postpaid.

**FUNKIA—DAY LILY (Subcordata grandiflora)**—(White Day Lily). Handsome spikes of large, waxy-white blossoms, with an odor like that of orange blossoms; and large, broad, glossy, light green foliage. 1 foot to 18 inches.

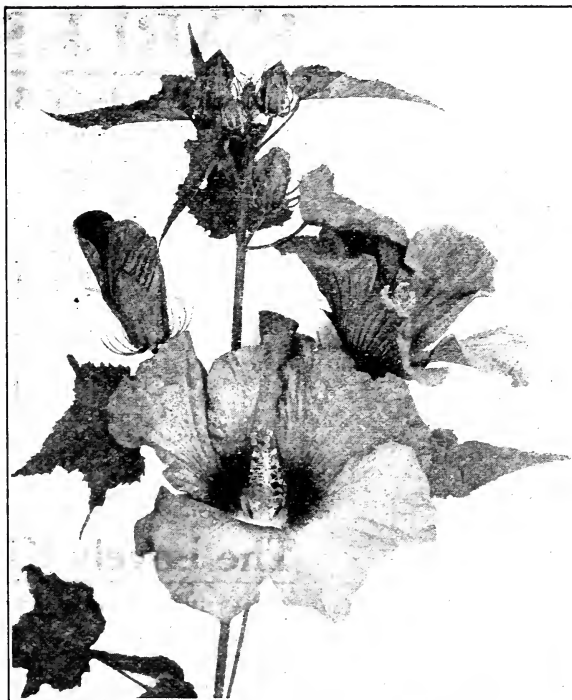
**Aurea variegata**—Flowers purplish-lilac; leaves beautifully variegated green and gold. 2 feet.

## Herbaceous Hydrangeas

These are the popular plants of the day for growing in pots, boxes, tubs, or in the open ground. Hardy for outdoors. **Otaksu**—Rich pink, changing to snow-white and blue.

**Avalanche**—Large corymbs of pure white flowers. General de **Vibraye**—Very large heads of bright rose.

Price, 20c each; 6 for \$1.00, postpaid; large specimen plants from 4- to 6-inch pots, 75c each, by express only.



Hibiscus Meehan's Marvel Mallows.

## Choicest Hardy Perennial Phlox

Diversified and brilliant colors, profuse and continuous bloom and adaptability to almost any situation or soil, places Hardy Phlox in the front rank of desirable flowering plants. Being perfectly hardy, once planted they improve and multiply in vigor and beauty each successive year. Price, strong, field-grown plants, 15c each; any 4 for 50c; any 9 for \$1.00.

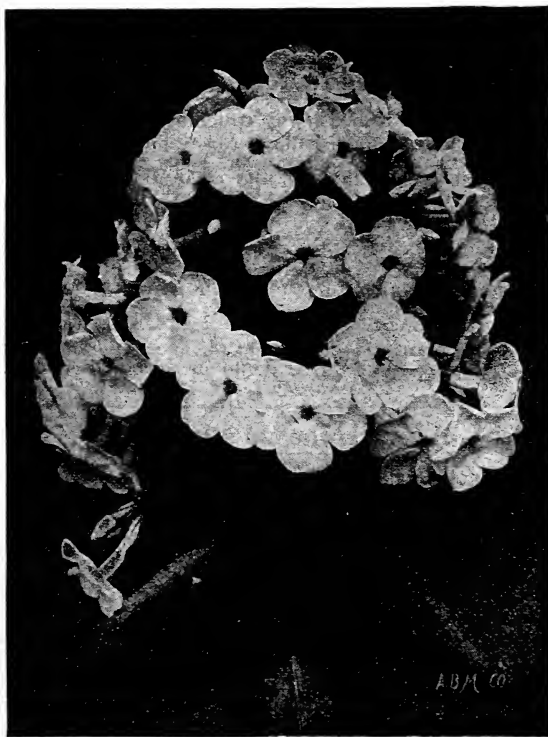
- Diadem.** Dwarf; pure white.
- Eclairéur.** Purplish-crimson; large.
- White Eclairéur.** Large; pure white.
- Fernand Cortez.** Tall; deep crimson.
- G. A. Strohhlen.** Brilliant scarlet.
- Iris.** Tall; bluish-violet.
- Tapis Blanc.** Dwarf; pure white.
- Terre Neuve.** Dwarf; grayish-lilac.
- Wolfgang von Goethe.** Dwarf; bright salmon-pink.
- Brilliant.** Clear blood-red.
- L'Aiglou.** Carmine-rose.
- Mount Sully.** Orange-scarlet, purple eye.
- Perle Rose.** Rose-purple.
- Schlossgartner Reichenau.** Carmine-rose.
- Selma.** Tall. Pale rose.
- Rachel.** Rose-pink; purple eye.
- Suffrage.** Lilac-mauve, rosy center.
- Mrs. Jenkins.** Pure white.
- Coquelicot.** Pure scarlet with crimson eye. Fine.

## German Iris

The memory of the "Blue Flag" of the old-time gardens is one ever sweet to those whose lives were lived in such surroundings, and while the "modern" Irises, if we may use the term, will remind one of the old days, they, too, like everything else of these days, have yielded to the influence of improvement, and there has been evolved a race of flowers absolutely bewildering in the glory of their form and color.

- Aurea**—Clear golden yellow.
- Canary Bird (Flavescens)**—Lovely pale yellow.
- Darius**—Yellow and lilac.
- Honorabilis (Sans Souci)**—Deep yellow; mahogany falls.
- Florentina Alba (Silver King)**—Early white.
- Ingeborg (Interregna)**—Immense white flowers. Extra early.
- Mrs. H. Darwin**—White, violet veining, rather dwarf.
- Lohengrin**—Foliage and flowers immense, of a deep violet mauve, almost pink; a wonderful flower.
- Queen of May (Rosy Morn)**—Lovely rose lilac.
- Madame Thibault**—White, bordered rose lilac—companion to Mad. Chereau, not so tall, edge more pinkish.
- Cherion**—Standard lilac-mauve; falls violet-mauve.

Price, 15c each; 9 for \$1.00, postpaid.



Phlox.

# "CHARLES DINGEE"

## The Most Wonderful Bush Rose in the World

(See the Colored Photographic Illustration on Outside Cover.)

To honor the name of Charles Dingee, we have produced a Rose better than any other variety in cultivation. We say without fear of contradiction that the Charles Dingee Rose is far-and-away the best garden Rose for general planting in the world.

It is always blooming, whether it is growing for us or growing with you. The flowers are beautiful beyond description, immense in size, deep, double and grandly formed. It is hardy everywhere.

The Charles Dingee Rose is the result of cross-breeding, between *Hermosa*, that grand old hardy pink variety, and *White Maman Cochet*, perhaps the greatest of all white garden Roses—a superb parentage, which insures its offspring every point of excellence. With the hardy, vigorous constitution of a Hybrid Perpetual, growing to perfection in almost any soil or situation, it has the most magnificent

foliage, absolutely free from disease, that we have ever seen on any Rose.

It is a tremendous grower, the best in our entire list of over 800 varieties. If you have a place where other Roses have failed in that spot, Charles Dingee will flourish and produce its gorgeous flowers with wonderful profusion. We have had it growing and blooming in all its glory in a temperature very little above freezing. Growing to a height of 2 to 3 feet, Charles Dingee blooms continuously, producing immense, deep, double, grandly formed flowers on long, stiff, erect stems; both in bud and bloom their beauty is nothing short of superb, practically impossible to describe because of their delicate blending of colors—rose tints in the center of flower, gradually shading off into pale blush creamy white, a color effect both entirely new and distinct, exquisitely beautiful.

Strong, one-year-old plants, 25c each, 5 for \$1.00, \$2.25 per dozen; larger size, 35c each, 3 for \$1.00, \$3.50 per dozen, postpaid. Large, two-year-old plants, on own roots, 50c each, \$5.00 per dozen; extra heavy, three-year-old plants (stock limited), magnificent specimens, ON OWN ROOTS, 75c each, \$8.00 per doz. by express.

## The Lovely Killarney Roses

(See Illustration in Colors on Opposite Page)

### \*Pink Killarney

#### The Famous Irish Rose

This queen of the Irish Roses excels any other of its class and color yet introduced, and by many is recognized as the most beautiful, hardy, ever blooming Hybrid Tea Rose now under culture. Each season since it was introduced Killarney has increased in popularity, and the demand has always exceeded the supply. We have an immense quantity, however, and guarantee every plant to be true to name. The bush is strong and upright, with beautiful deep bronzy green foliage, and the Rose is entirely free-blooming, bearing immense, long pointed buds and massive flowers on big, heavy shoots. The color is deep, brilliant and sparkling shell-pink, of the most exquisite shade. The flowers are of delightful fragrance, immense size, and have thick petals of great substance. Killarney is unusually hardy and without protection has stood severe winters as far north as Boston. Strong one-year-old plants, 20c each, 3 for 50c. Extra strong two-year-old plants, on own roots, 50c each.

### \*White Killarney

An offspring of the pink Killarney is one of the most exquisite white Roses grown. The long, full buds are handsome in shape and the full-open flower most refined and beautiful in form and texture. Strong plants, 20c each, 6 for \$1.00; two-year-old plants, 50c each.

### \*Yellow Killarney

#### Mme. Jenny Gillemot

A brilliant saffron-yellow Rose, opening canary with dark golden shades. The buds are long and pointed, beautiful in form and color, the flowers are large with immense petals. Hardy and vigorous, it is in constant bloom all summer. Blooms produced on long, stiff stems, making an excellent Rose for cutting. Owing to its resemblance to the Killarneys, we have called it the Yellow Killarney, as it makes a good companion for them. 20c each, 3 for 50c; two-year-old plants, 50c each.

**Special Offer** One each of these Killarneys, 3 in all, first size plants, sent postpaid for 50c. One of each, 3 in all, two-year-old plants, sent by express, for \$1.25. 3-year-old or specimen plants, by express, for \$2.00.

## Hardy Climbing Vines

The various plants described on this page are all perfectly hardy and of exceedingly rapid and vigorous growth. They are used extensively for covering old buildings, trees, fences, etc., which they will completely cover in the process of time. Some of them, like the Ivies, survive for ages and attain immense proportions.

(*Wistaria Magnifica*.) The finest *Wistaria* of its color now known. Extremely vigorous, growing 30 to 40 feet in one season when well established. The flowers are pale lilac, and the immense clusters of drooping racemes, which measure 12 to 18 inches in length, are deliciously fragrant, 20c each; 3 for 50c. *Wistaria Alba*—There is nothing more striking or appropriate for pergolas and the ordinary trellises than this splendid vine. Pure white flowers. 20c each; 3 for 50c.

## Honeysuckle

Price, 15c each, postpaid; two-year-old plants, 25c each; assorted varieties, \$2.50 per dozen, by express.

Chinese Sweet Scented—White and yellow flowers.

Red Coral—Red trumpet-shaped flowers.

Yellow Coral—The only true golden yellow Honeysuckle.

Golden-Leaved—Leaves beautifully veined and spotted with clear yellow. Flowers yellow and fragrant.

New Halliana—Evergreen and a constant bloomer; flowers pure white, changing to yellow. Very fragrant.

New Heckrottii—Clear rose, yellow at the base; sweet and fragrant; in constant bloom.

# The Lovely Killarney Roses

Hardy Everblooming Bush Roses



**WEST GROVE ROSE & FLORAL CO.**



...WEST GROVE, PENNA....





The Wonderful Bush Rose  
CHARLES DINGEE

Our Greatest Bush Rose  
"CHARLES DINGEE"

SEE NEXT PAGE

INTRODUCED AND FOR SALE BY

**WEST GROVE ROSE & FLORAL CO.**



...WEST GROVE, PENNA. ...

